

FIGURE 8-1 OUTPUT COIL & SWITCH ASSEMBLY, TOP VIEW

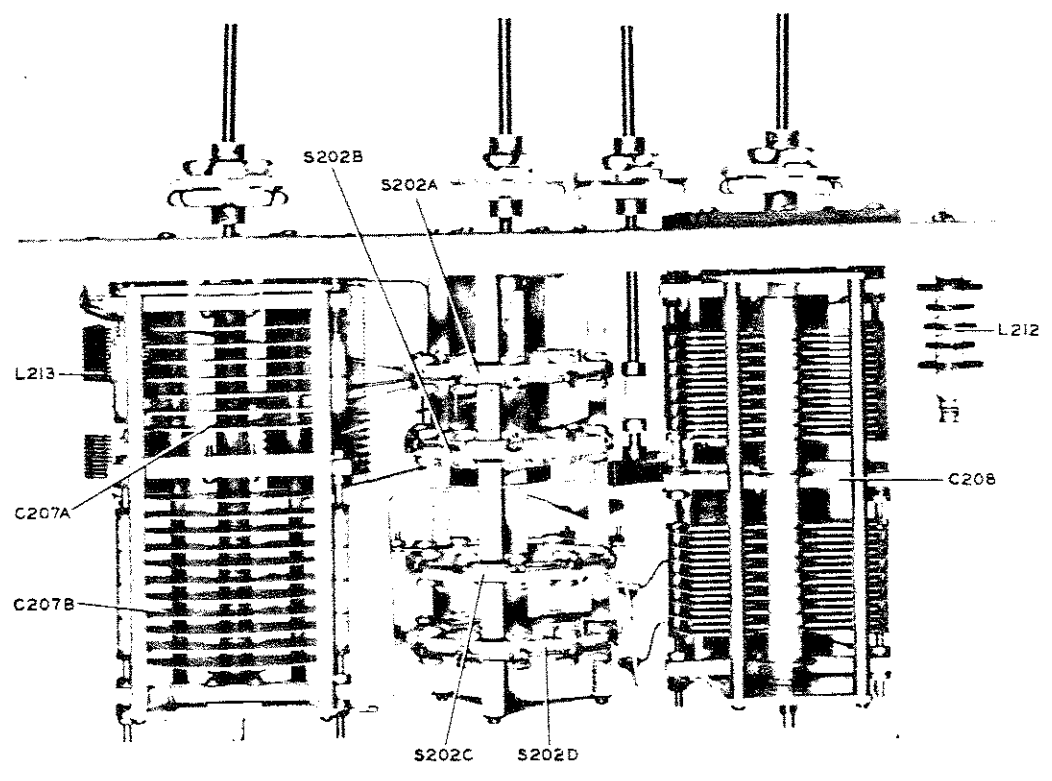


FIGURE 8-2 OUTPUT COIL & SWITCH ASSEMBLY, BOTTOM VIEW

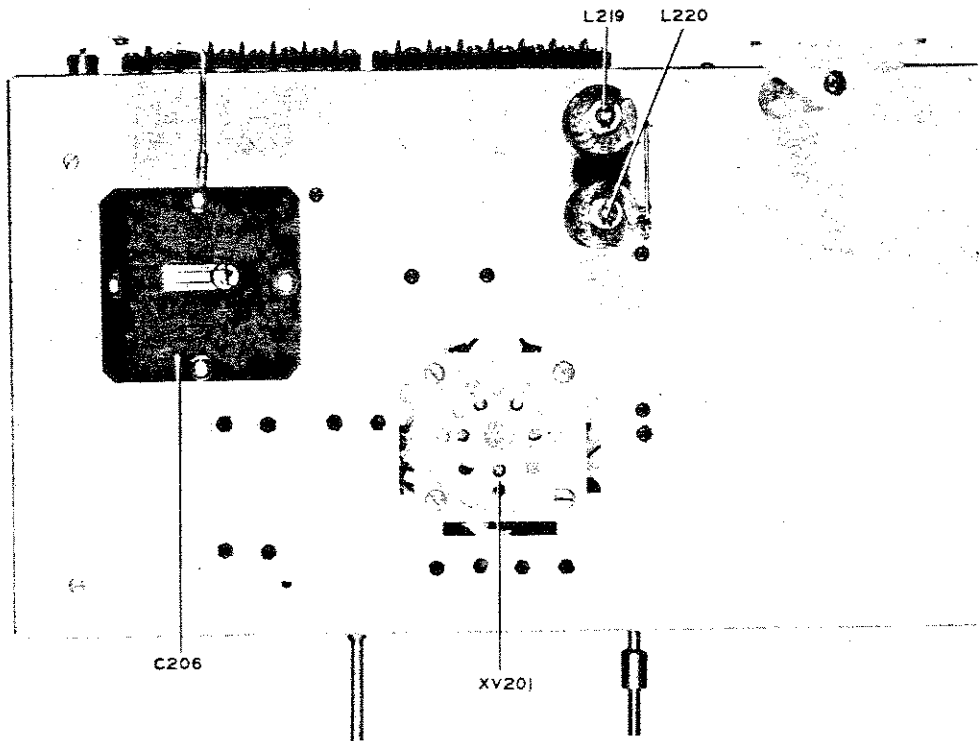


FIGURE 8-3 POWER AMPLIFIER TUBE CHASSIS, TOP VIEW

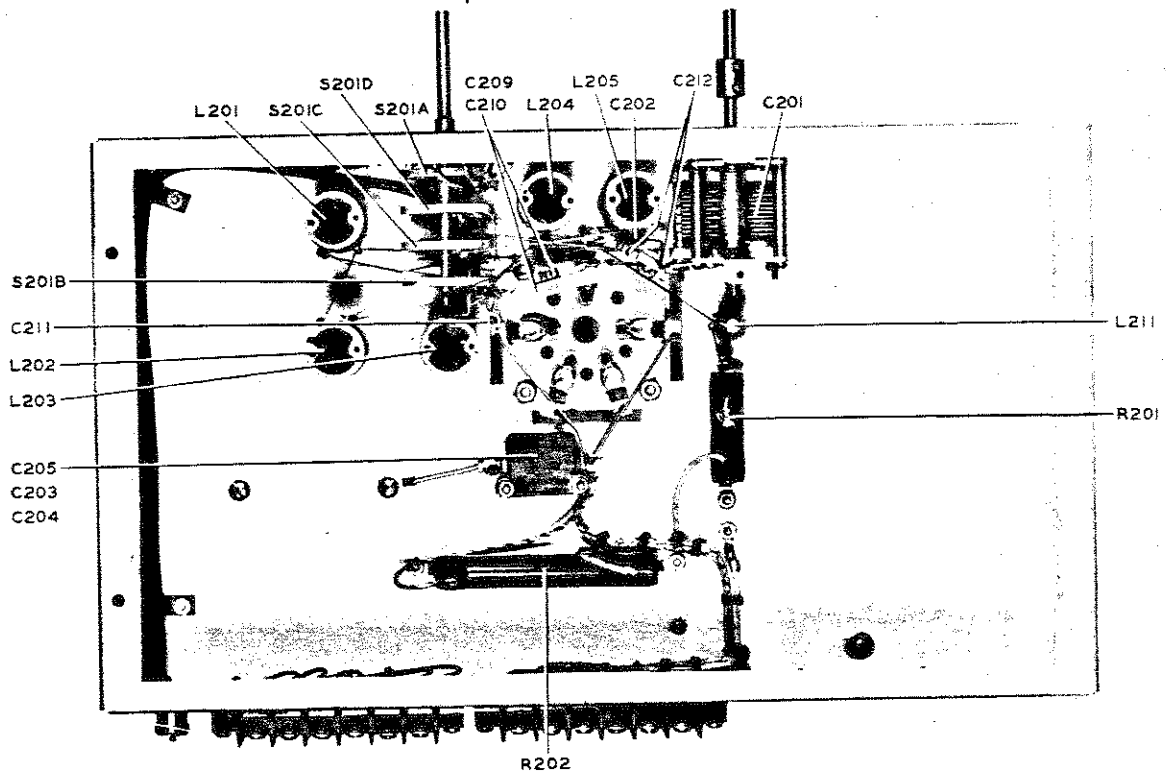


FIGURE 8-4 POWER AMPLIFIER TUBE CHASSIS, BOTTOM VIEW

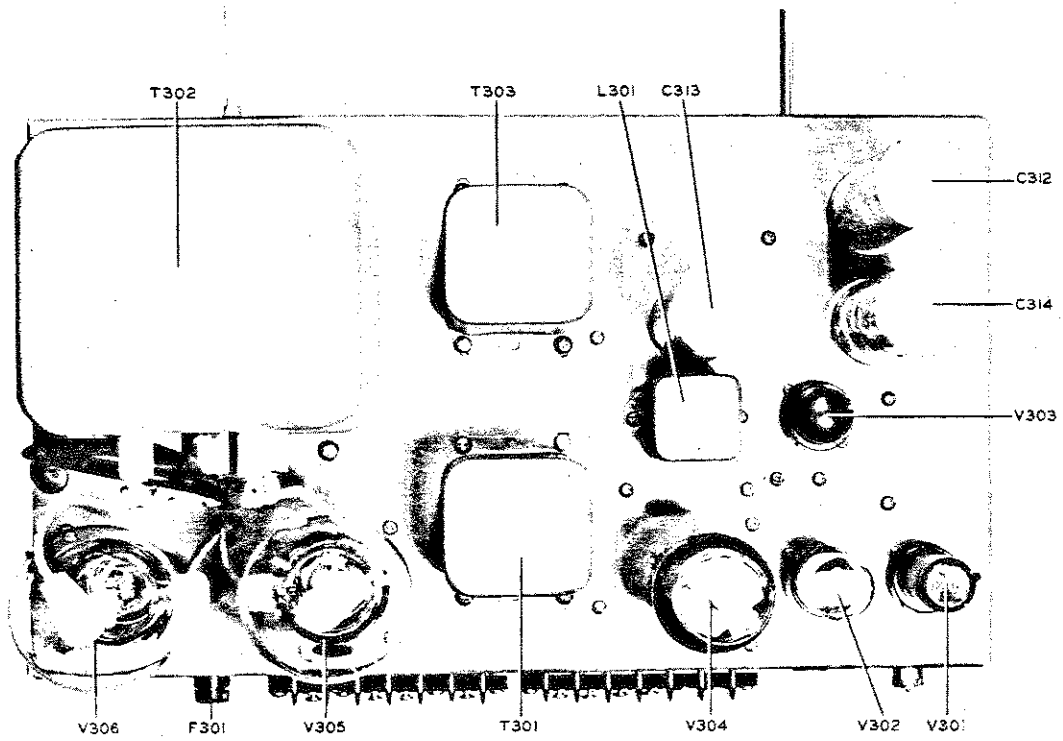


FIGURE 8-5 SPEECH AMPLIFIER AND MODULATOR, TOP VIEW

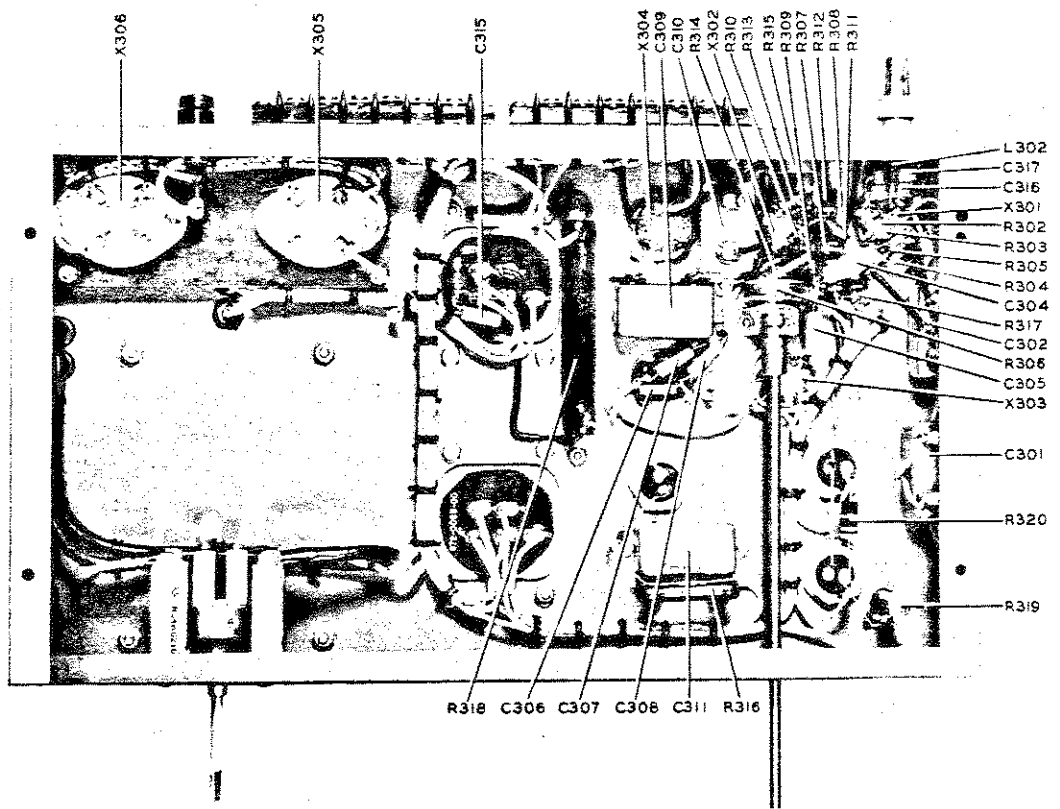


FIGURE 8-6 SPEECH AMPLIFIER AND MODULATOR, BOTTOM VIEW

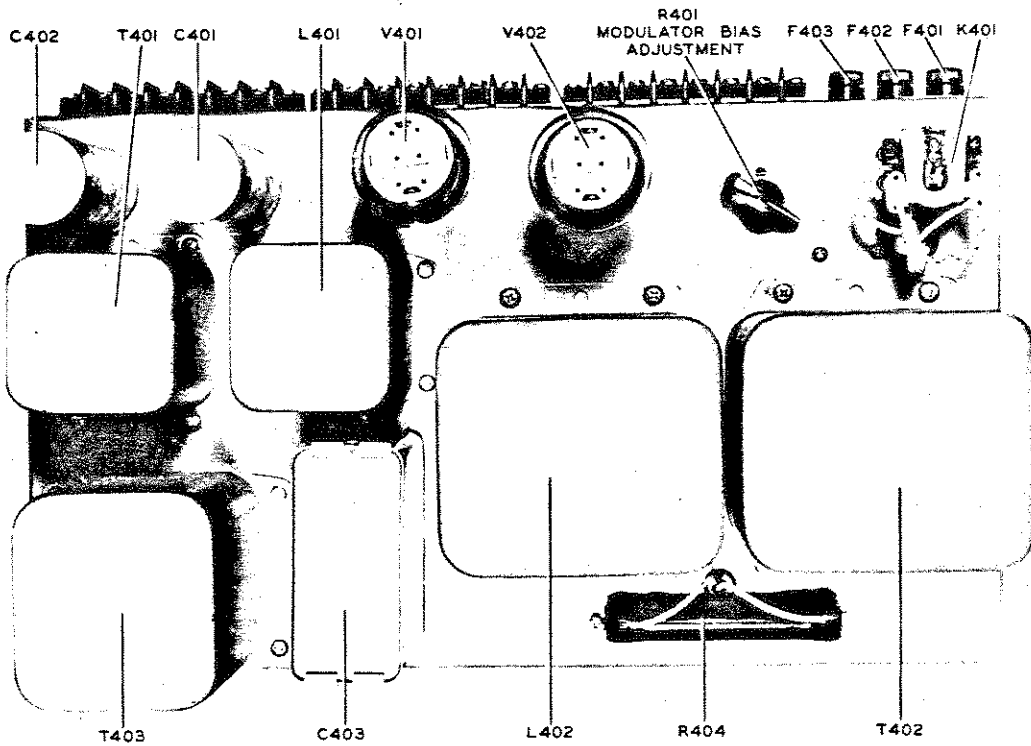


FIGURE 8-7 LOW VOLTAGE AND BIAS SUPPLY, TOP VIEW

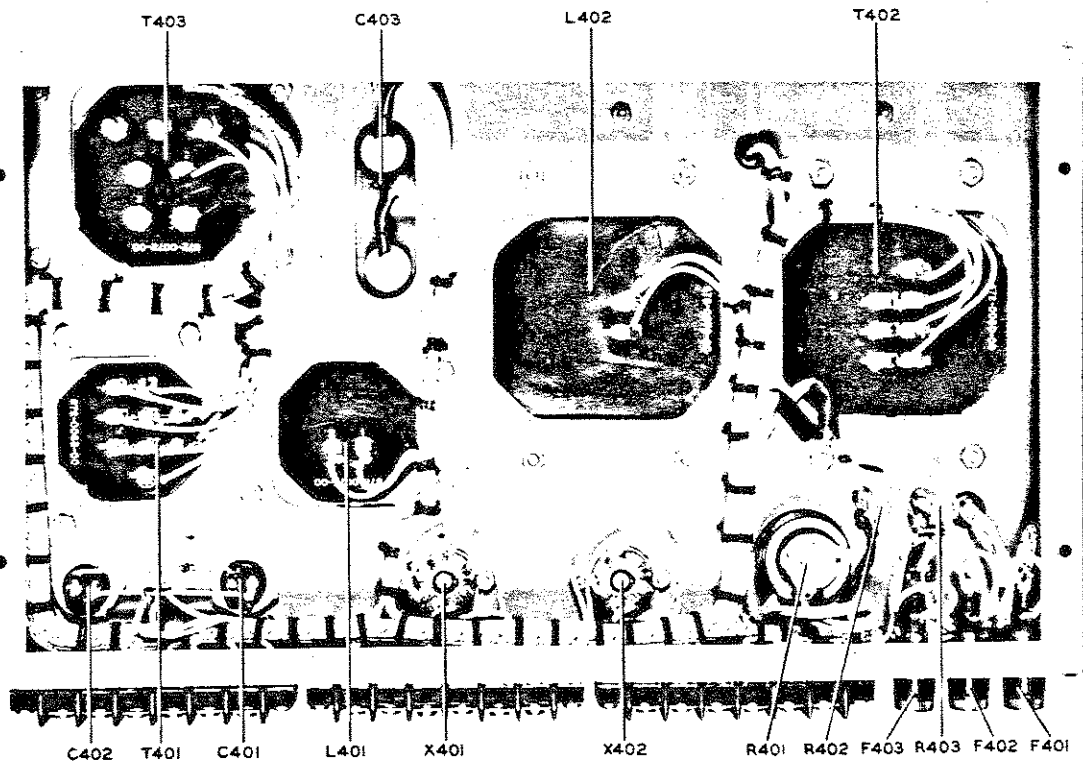


FIGURE 8-8 LOW VOLTAGE AND BIAS SUPPLY, BOTTOM VIEW

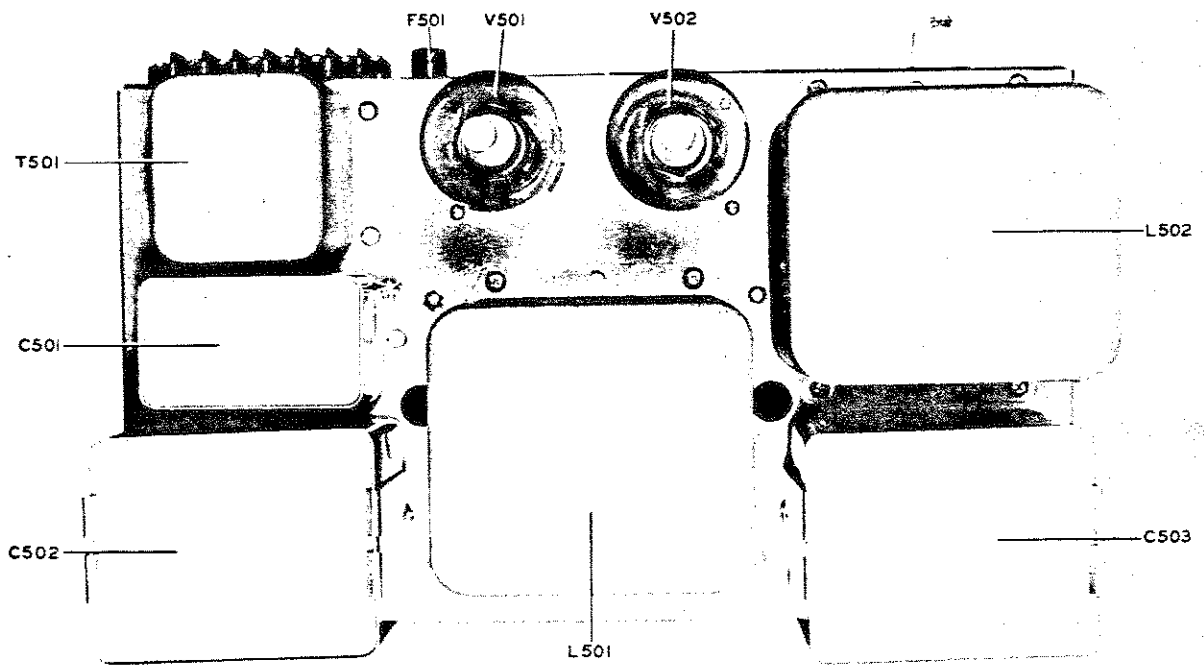


FIGURE 8-9 HIGH VOLTAGE RECTIFIER UNIT, TOP VIEW

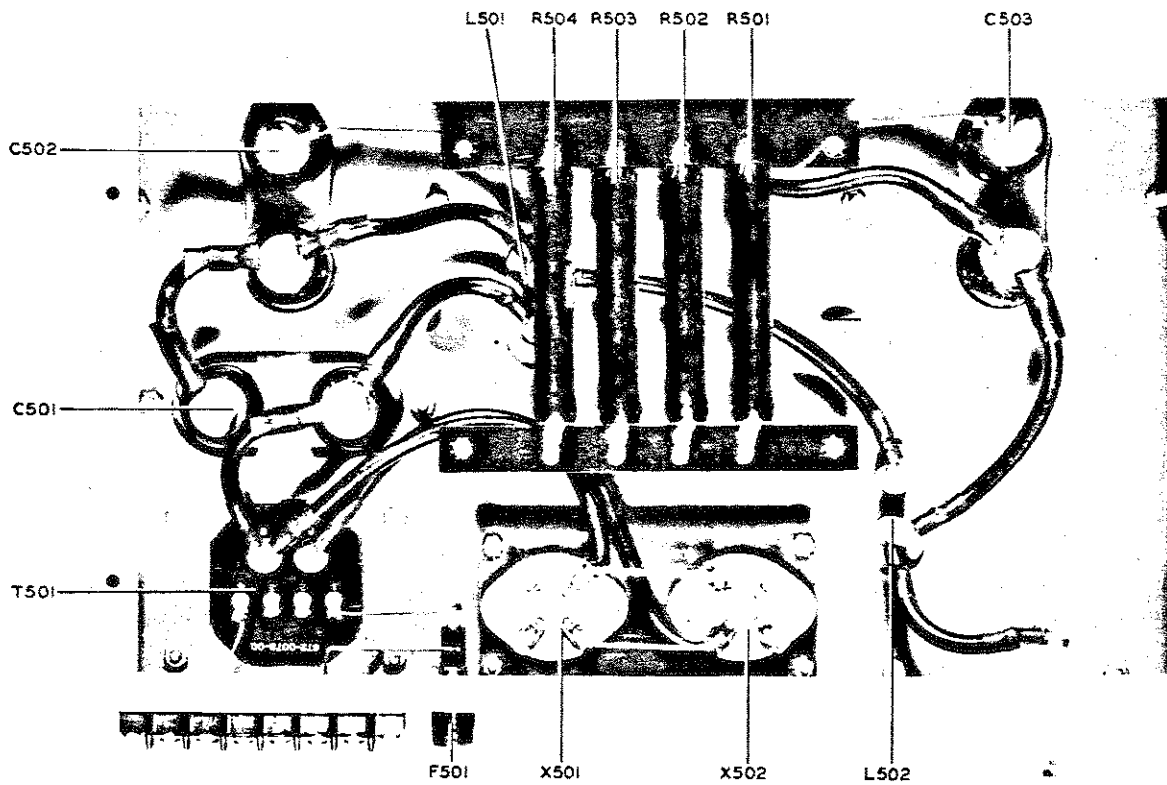


FIGURE 8-10 HIGH VOLTAGE RECTIFIER UNIT, BOTTOM VIEW

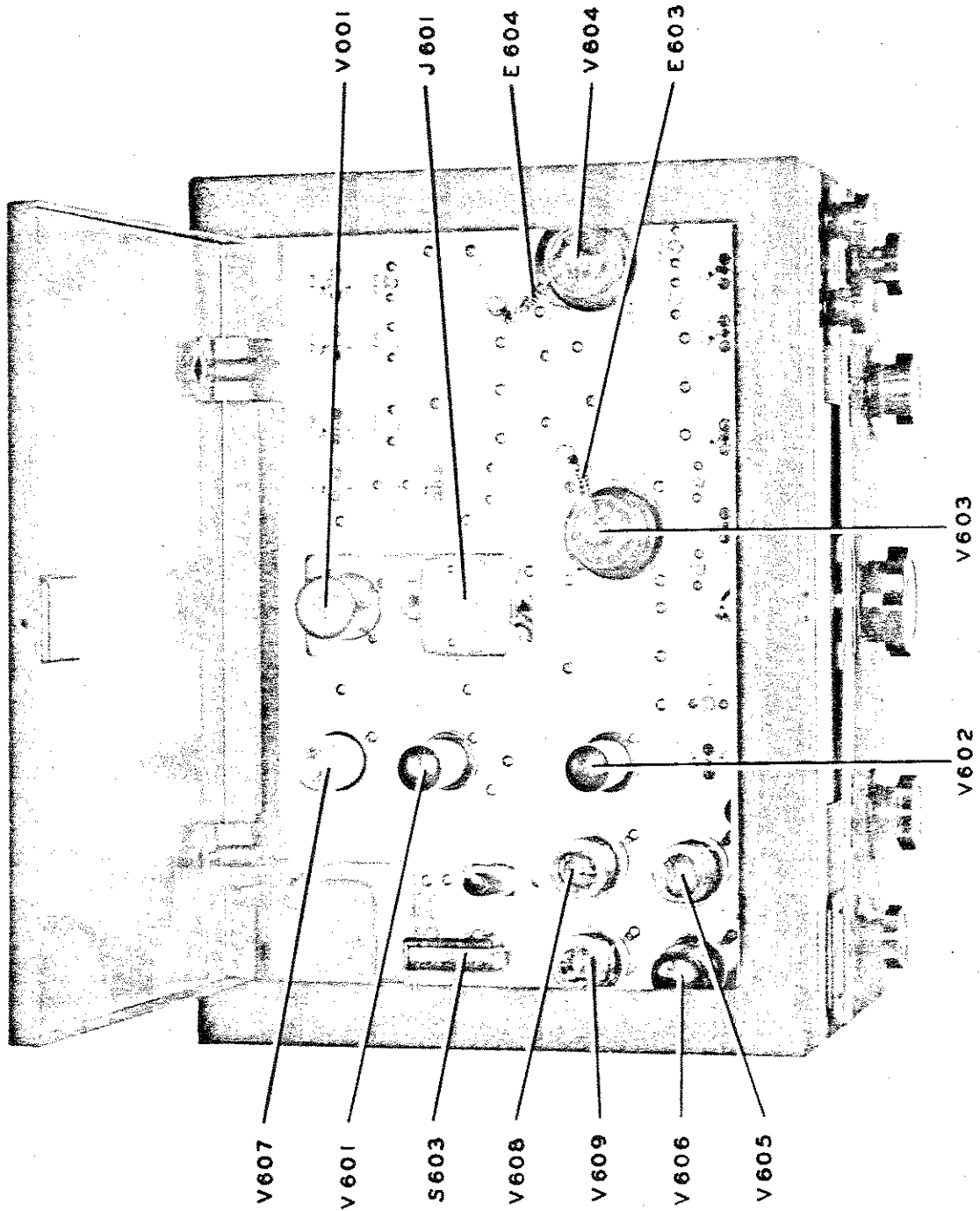


FIGURE 8-II EXCITER UNIT, TOP OPEN VIEW

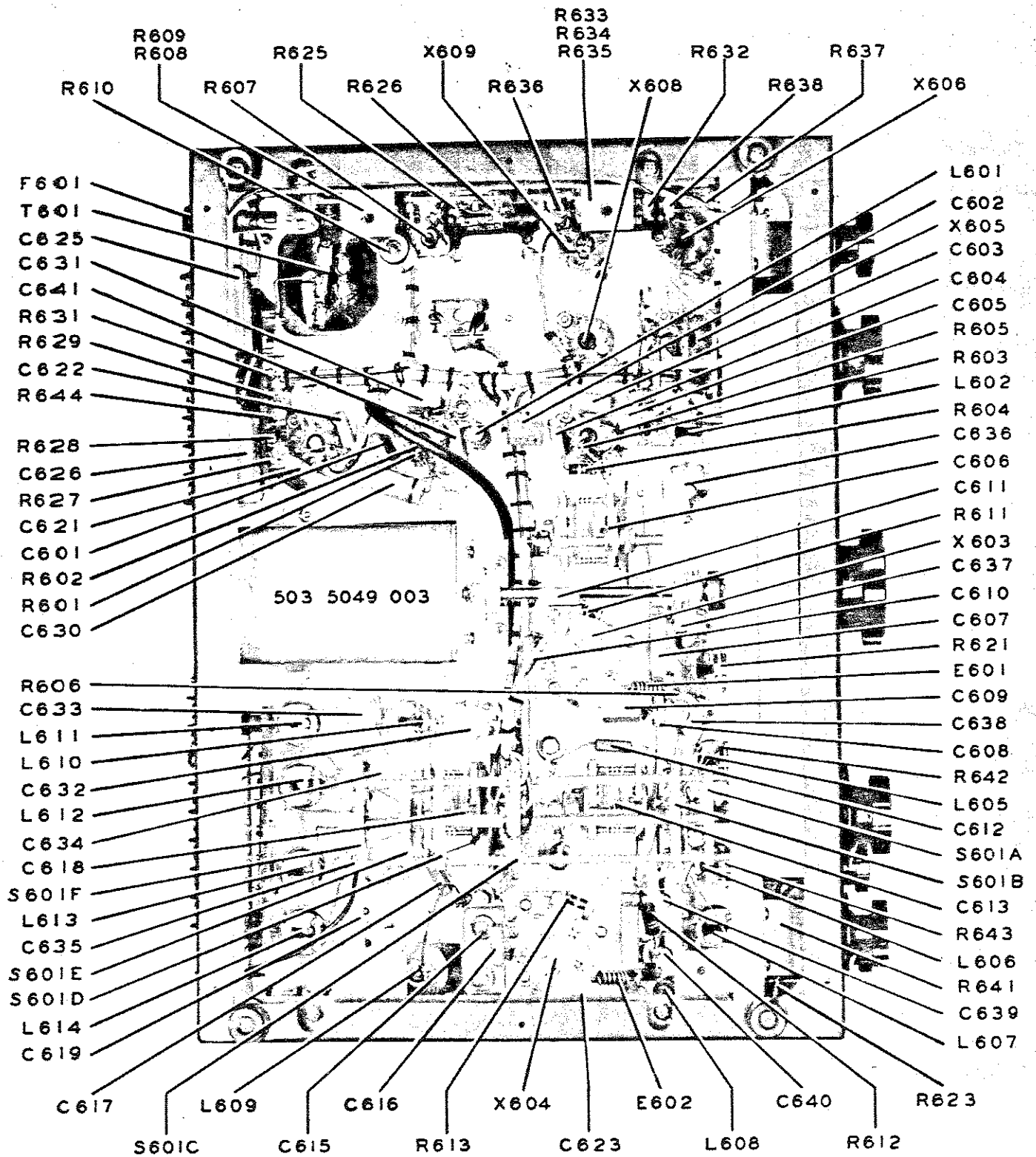


FIGURE 8-12 EXCITER UNIT, BOTTOM OPEN VIEW

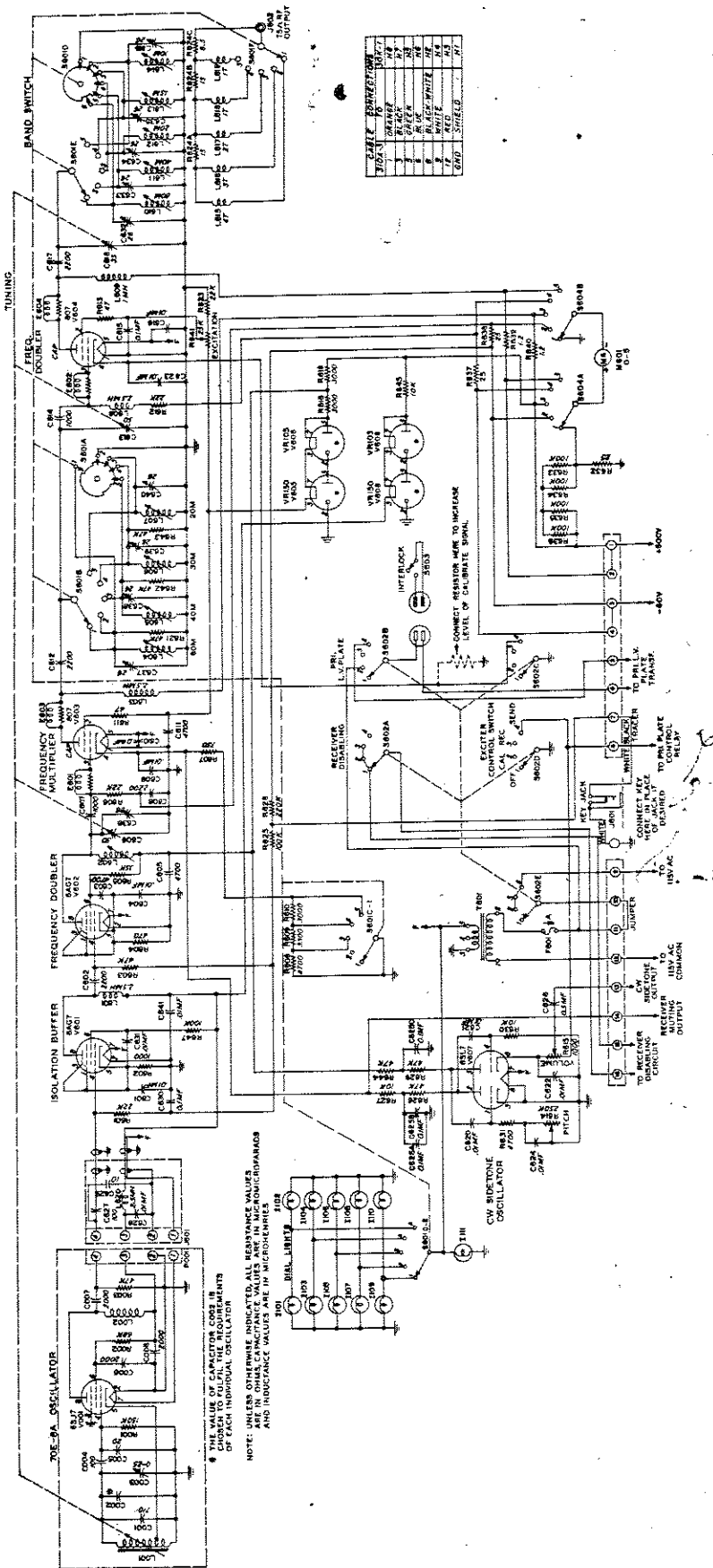
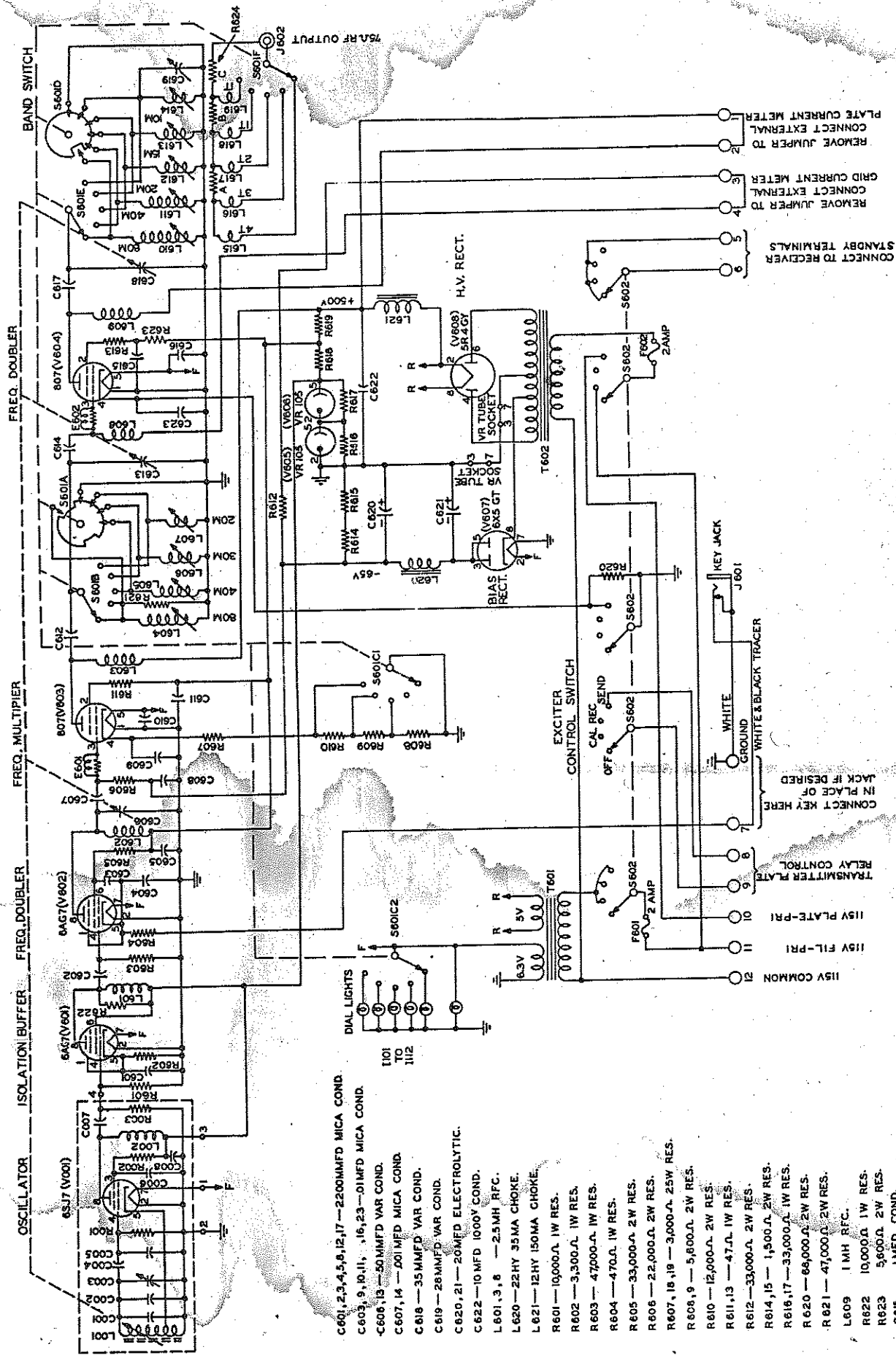


Figure 8-14 310A Exciter Unit Schematic Diagram



- C601, 2, 3, 4, 5, 6, 12, 17 — 220MMFD MICA COND.
- C603, 9, 10, 11, 16, 23 — 01MFD MICA COND.
- C606, 13 — 50MMFD MICA COND.
- C607, 14 — .01MFD MICA COND.
- C618 — 35MMFD VAR COND.
- C619 — 28MMFD VAR COND.
- C620, 21 — 20MFD ELECTROLYTIC.
- C622 — 10MFD 100V COND.
- L601, 3, 1, 8 — 2.5MH RFC.
- L620 — 22HY 35MA CHOKE.
- L621 — 12HY 150MA CHOKE.
- R601 — 10,000.Ω 1W RES.
- R602 — 3,300.Ω 1W RES.
- R603 — 47,000.Ω 1W RES.
- R604 — 470.Ω 1W RES.
- R605 — 33,000.Ω 2W RES.
- R606 — 22,000.Ω 2W RES.
- R607, 18, 19 — 3,000.Ω 25W RES.
- R608, 9 — 5,000.Ω 2W RES.
- R610 — 12,000.Ω 2W RES.
- R611, 13 — 47.Ω 1W RES.
- R612 — 33,000.Ω 2W RES.
- R614, 15 — 1,500.Ω 2W RES.
- R616, 17 — 33,000.Ω 1W RES.
- R620 — 85,000.Ω 2W RES.
- R621 — 47,000.Ω 2W RES.
- L609 — 1MH RFC.
- R622 — 10,000.Ω 1W RES.
- R623 — 5,000.Ω 2W RES.
- C615 — 1MFD COND.
- R624A, B, C — 15, 15, 15.Ω RES.

CONNECT TO RECEIVER
STANDBY TERMINALS

REMOVE JUMPER TO
GRID CURRENT METER

REMOVE JUMPER TO
EXTERNAL

REMOVE JUMPER TO
EXTERNAL

REMOVE JUMPER TO
EXTERNAL

REMOVE JUMPER TO
EXTERNAL

REMOVE JUMPER TO
EXTERNAL

REMOVE JUMPER TO
EXTERNAL

REMOVE JUMPER TO
EXTERNAL

REMOVE JUMPER TO
EXTERNAL

REMOVE JUMPER TO
EXTERNAL

REMOVE JUMPER TO
EXTERNAL

REMOVE JUMPER TO
EXTERNAL

REMOVE JUMPER TO
EXTERNAL

REMOVE JUMPER TO
EXTERNAL

REMOVE JUMPER TO
EXTERNAL

REMOVE JUMPER TO
EXTERNAL

REMOVE JUMPER TO
EXTERNAL

REMOVE JUMPER TO
EXTERNAL

REMOVE JUMPER TO
EXTERNAL

REMOVE JUMPER TO
EXTERNAL

REMOVE JUMPER TO
EXTERNAL

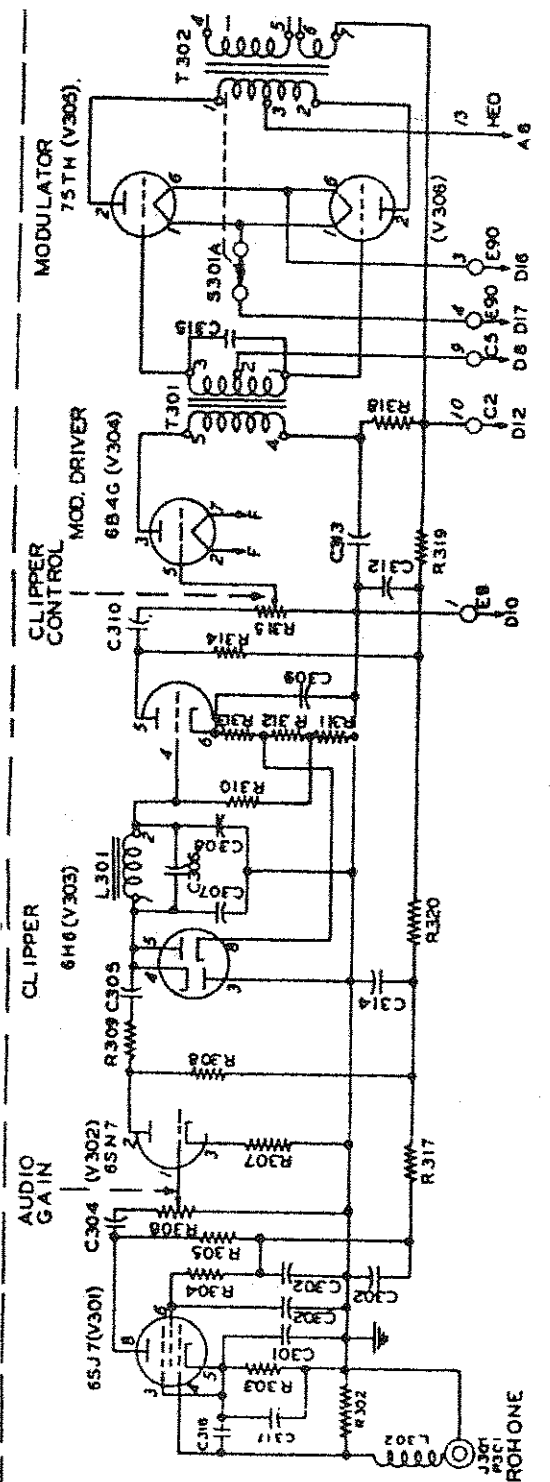
REMOVE JUMPER TO
EXTERNAL

REMOVE JUMPER TO
EXTERNAL

REMOVE JUMPER TO
EXTERNAL

REMOVE JUMPER TO
EXTERNAL

Figure 2-17 210A Exciter Unit Schematic Diagram



- 57F7CH AMP & MODULATOR
- C301, 9.11 20MFD COND
 - C302, 1-1/2-1 MFD COND
 - C304, 5.01 MFD. MICA COND.
 - C306, 180MMFD. MICA COND.
 - C307, 8 200MMFD MICA COND.
 - C310, .1 MFD. COND.
 - C312, 13.14 4MFD COND
 - C315, 4700 MMFD MICA COND.
 - C316, 100 MMFD MICA COND.
 - C317, 1000 MMFD MICA COND.
 - C318, 3.75 HY AUDIO REACTOR
 - L301, 3.6 MH
 - L302, 10 MEG. 1/2 W RES.
 - R303, 1000Ω 1/2 W RES.
 - R304, 470,000Ω 1/2 W RES.
 - R305, 10 100,000Ω 1 W RES.
 - R306, 500,000Ω POTENTIOMETER
 - R307, 1000Ω 1 W RES.
 - R308, 14 4 00Ω 2 W RES.
 - R309, 100,000Ω 1/2 W RES.
 - R311, 12 820Ω 1 W RES.
 - R313, 330Ω 1 W RES.
 - R315, 100,000Ω POT.
 - R316, 750Ω 10 W RES.
 - R317, 47,000Ω 1 W RES.
 - R318, 4000Ω 50 W RES.
 - R319, 20,000Ω 10 W RES.
 - R320, 4,700Ω 2 W RES.

MICROPHONE

C

COLLINS 30K-1 AMATEUR TRANSMITTER

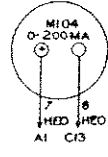
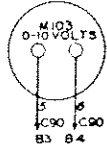
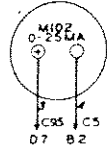
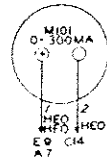
METER PANEL

P.A. PLATE CURRENT

P.A. GRID CURRENT

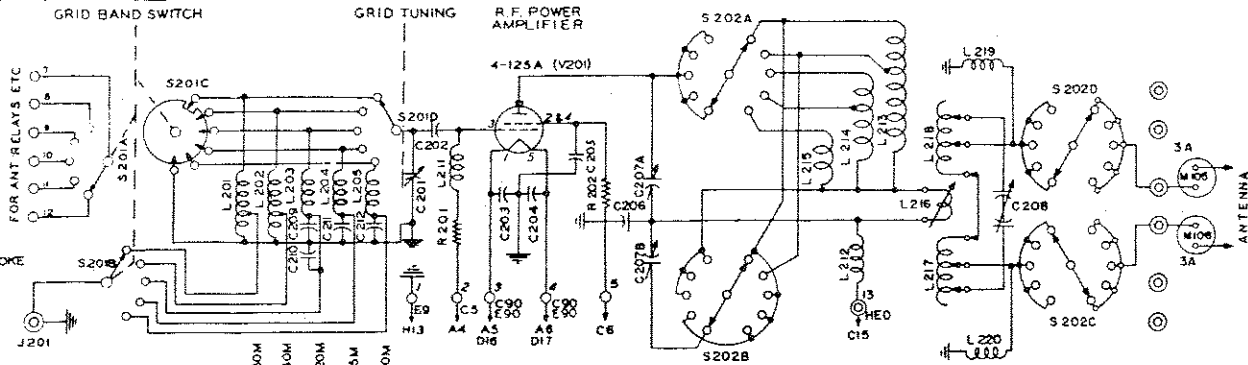
FILAMENT VOLTAGE

MOD. PLATE CURRENT



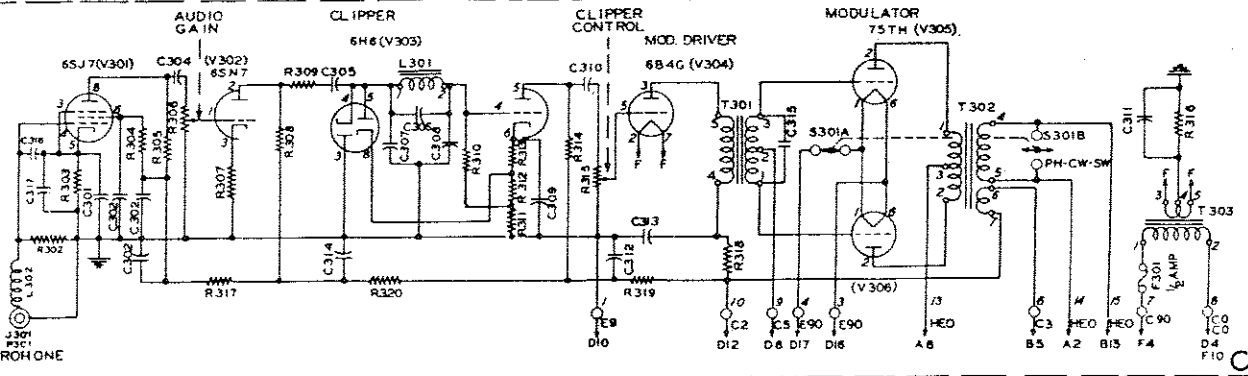
CABLE DESIGNATION A

R.F. PWR. AMP. TUBE & TANK CIRCUITS



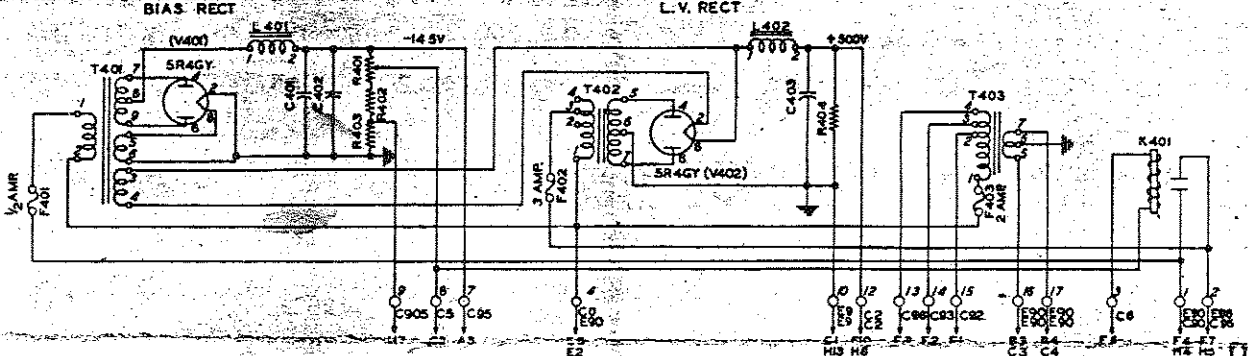
CABLE DESIGNATION B

SPEECH AMP. & MODULATOR



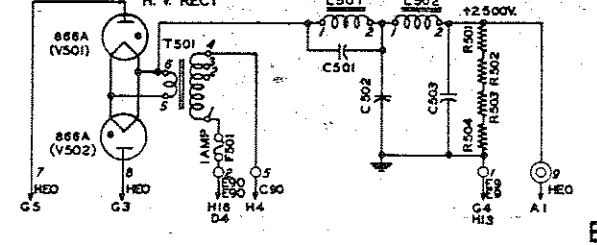
CABLE DESIGNATION C

LOW VOLTAGE & BIAS POWER SUPPLY

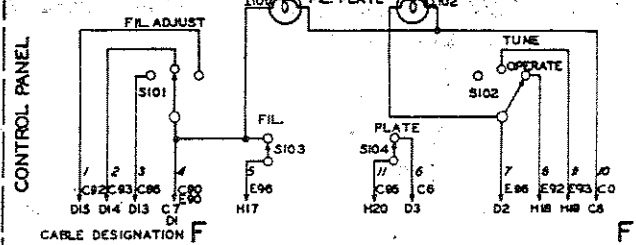


CABLE DESIGNATION D

HIGH VOLTAGE RECTIFIER

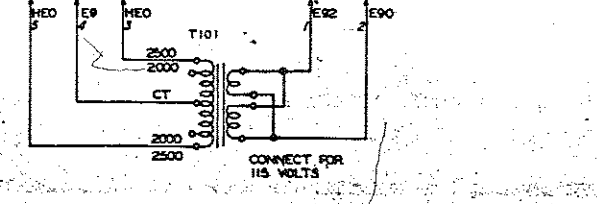


CABLE DESIGNATION E

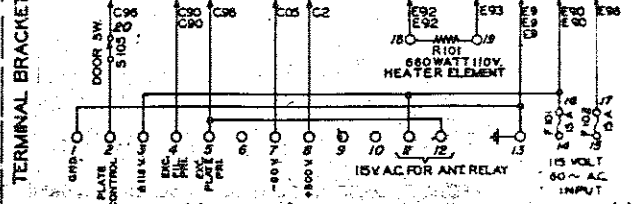


CABLE DESIGNATION F

H.V. PWR. TRANS.



CABLE DESIGNATION G



CABLE DESIGNATION H

METER PANEL

CABLE DESIGNATION A

CABLE DESIGNATION B

CABLE DESIGNATION C

CABLE DESIGNATION D

CABLE DESIGNATION E

CABLE DESIGNATION F

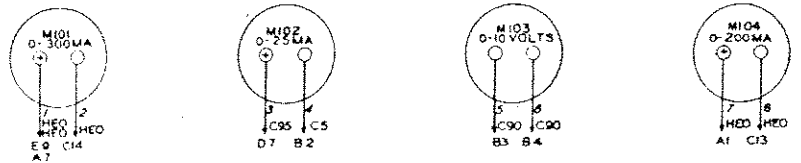
CABLE DESIGNATION G

CABLE DESIGNATION H

COLLINS 30K-1 AMATEUR TRANSMITTER

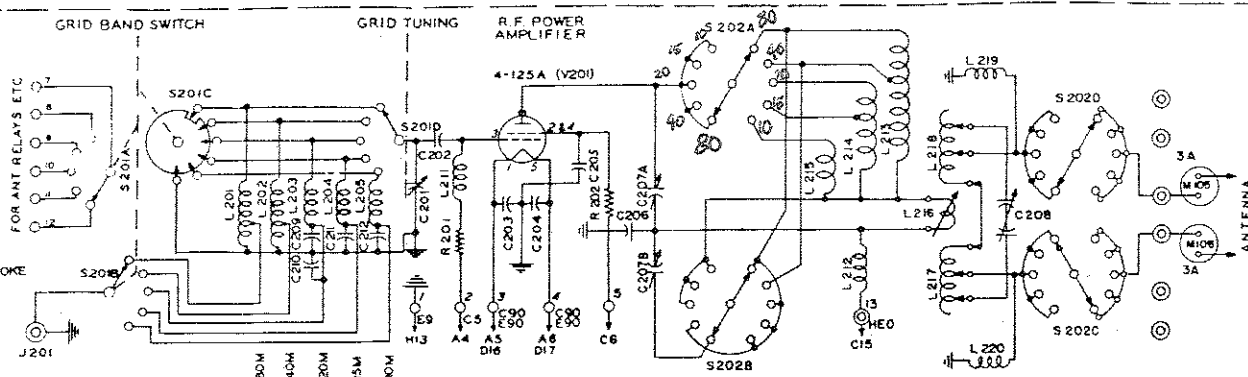
METER PANEL

P A. PLATE CURRENT P A. GRID CURRENT FILAMENT VOLTAGE MOD PLATE CURRENT



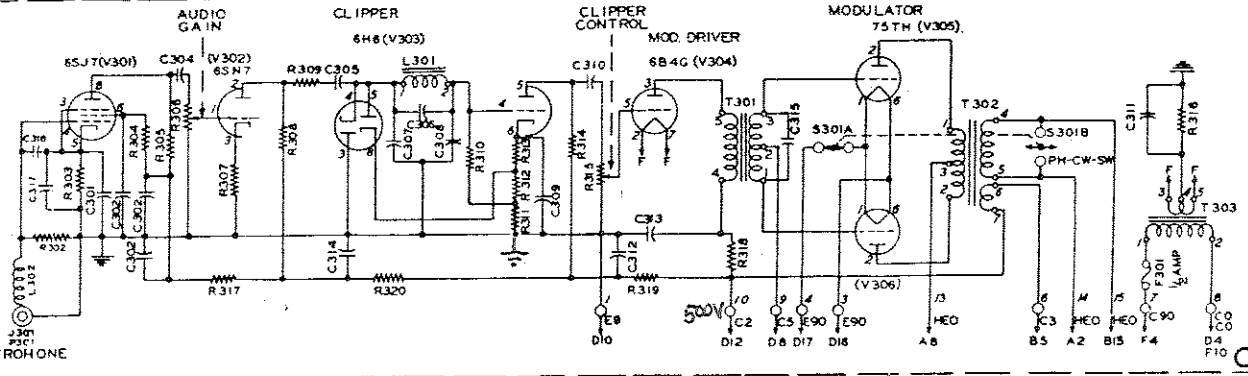
CABLE DESIGNATION A

RF PWR AMP TUBE & TANK CIRCUITS



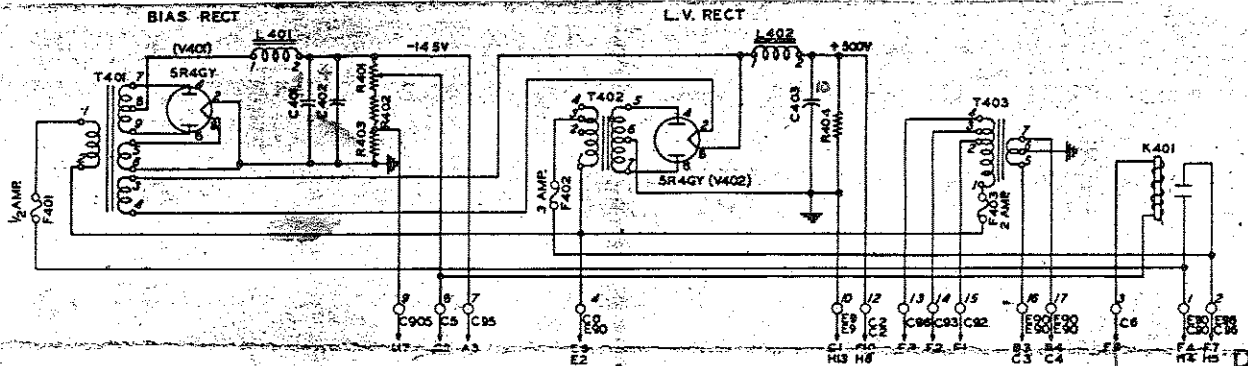
CABLE DESIGNATION B

SPEECH AMP & MODULATOR



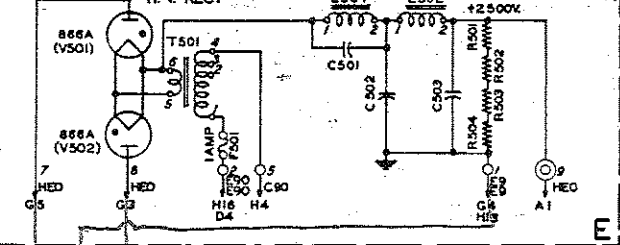
CABLE DESIGNATION C

LOW VOLTAGE & BIAS POWER SUPPLY



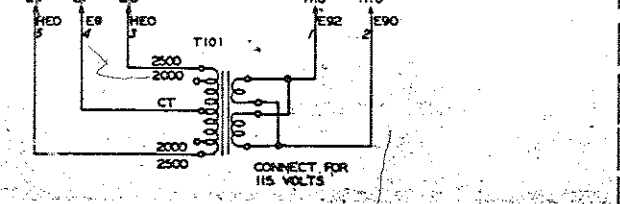
CABLE DESIGNATION D

HIGH VOLTAGE RECTIFIER

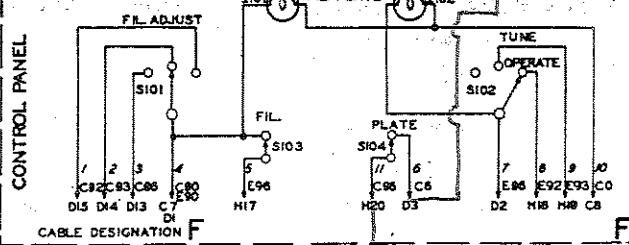


CABLE DESIGNATION E

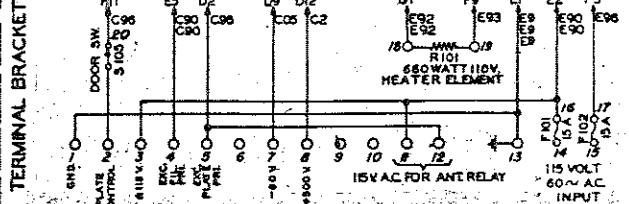
POWER TRANSFORMER



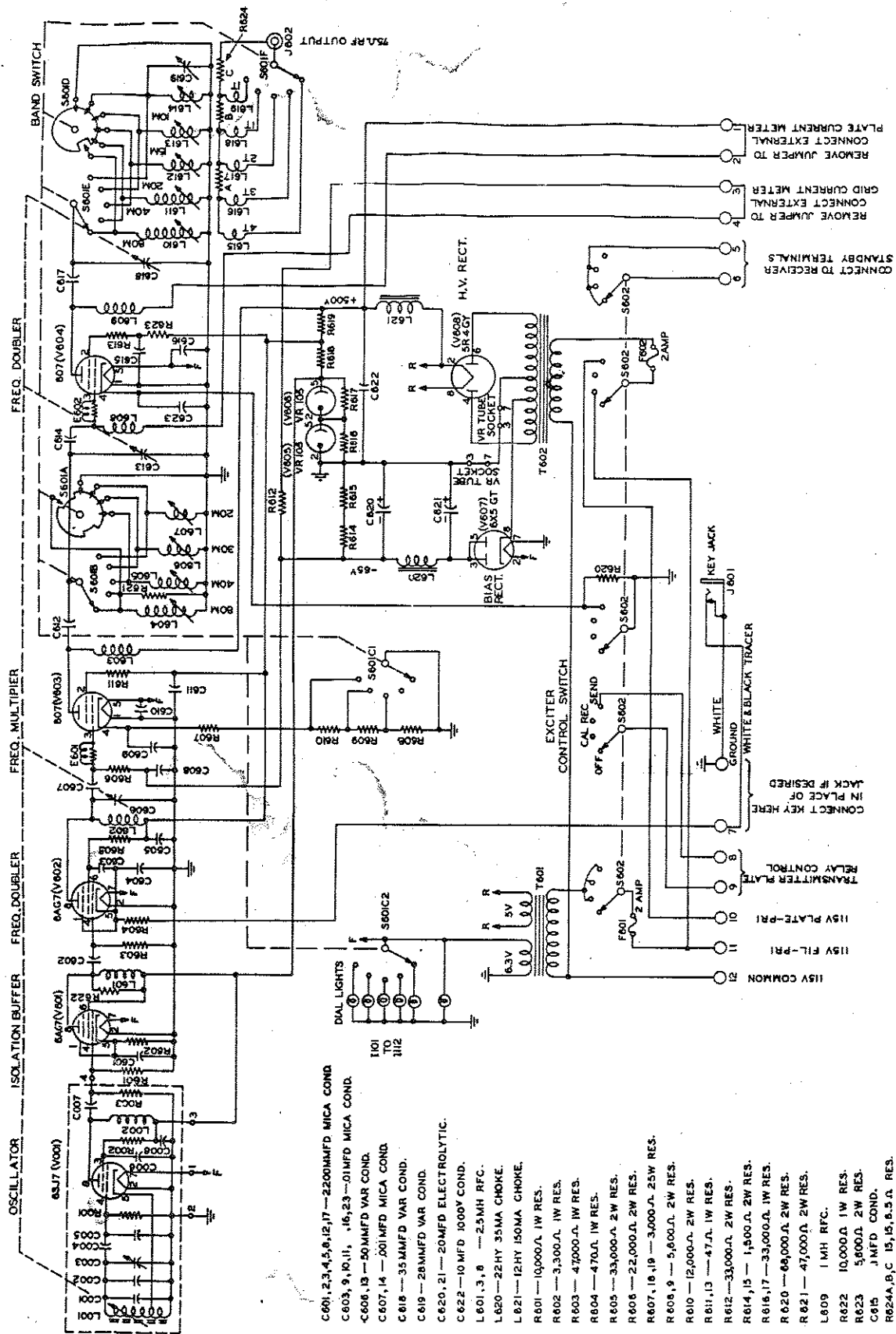
CABLE DESIGNATION G



CABLE DESIGNATION F



CABLE DESIGNATION H



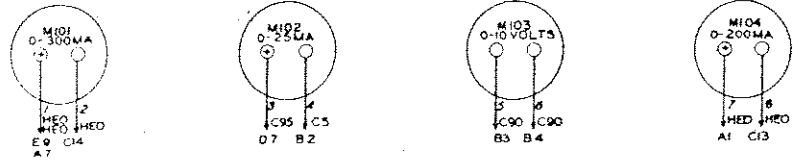
- C601, 2, 3, 4, 5, 6, 12, 17 — 2200MMFD MICA COND.
- C603, 9, 10, 11, 16, 23 — 01MFD MICA COND.
- C606, 19 — 50 MMFD VAR COND.
- C607, 14 — 201MFD MICA COND.
- C618 — 35MMFD VAR COND.
- C619 — 28MMFD VAR COND.
- C620, 21 — 20MFD ELECTROLYTIC.
- C622 — 10 MFD 100V COND.
- L601, 3, 8 — 2.5MH RFC.
- L620 — 22HY 35MA CHOKE.
- L621 — 12HY 150MA CHOKE.
- R601 — 10,000.Ω 1W RES.
- R602 — 3,300.Ω 1W RES.
- R603 — 47000.Ω 1W RES.
- R604 — 4700.Ω 1W RES.
- R605 — 33,000.Ω 2W RES.
- R606 — 22,000.Ω 2W RES.
- R607, 16, 19 — 3,000.Ω 2.5W RES.
- R608, 9 — 5,000.Ω 2W RES.
- R610 — 12,000.Ω 2W RES.
- R611, 13 — 47.Ω 1W RES.
- R612 — 33,000.Ω 2W RES.
- R614, 15 — 1,500.Ω 2W RES.
- R616, 17 — 33,000.Ω 1W RES.
- R620 — 68,000.Ω 2W RES.
- R621 — 47,000.Ω 2W RES.
- L609 1 MH RFC.
- R622 10,000.Ω 1W RES.
- R623 5,000.Ω 2W RES.
- C615 1 MFD COND.
- R624A, B, C 15, 15, 15.Ω A RES.

Figure 8-14 310A Exciter Unit Schematic Diagram

COLLINS 30K-1 AMATEUR TRANSMITTER

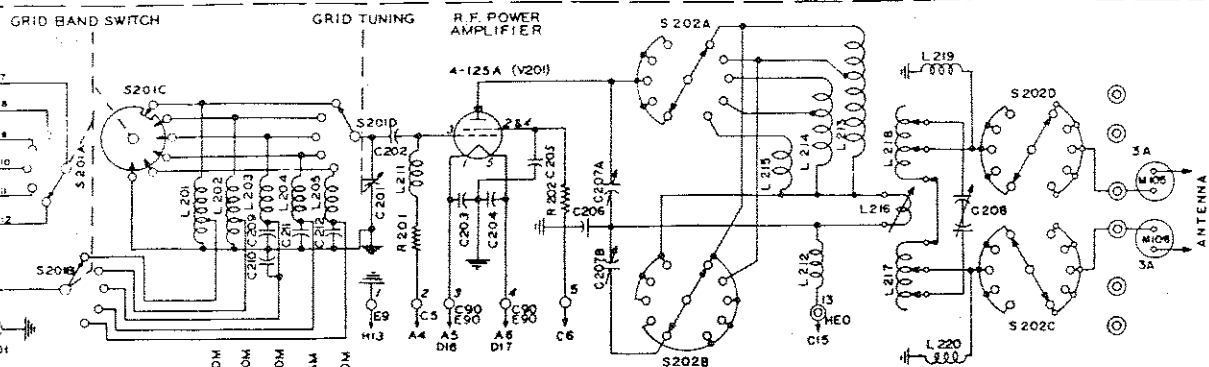
METER PANEL

P A PLATE CURRENT P A GRID CURRENT FILAMENT VOLTAGE MOD PLATE CURRENT



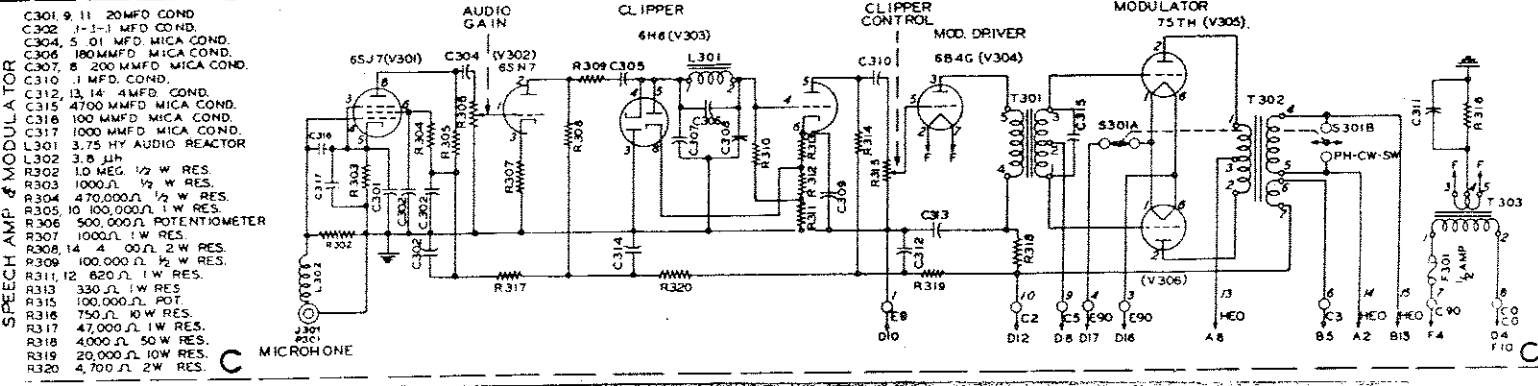
CABLE DESIGNATION **A**

RF PWR. AMP. TUBE & TANK CIRCUITS



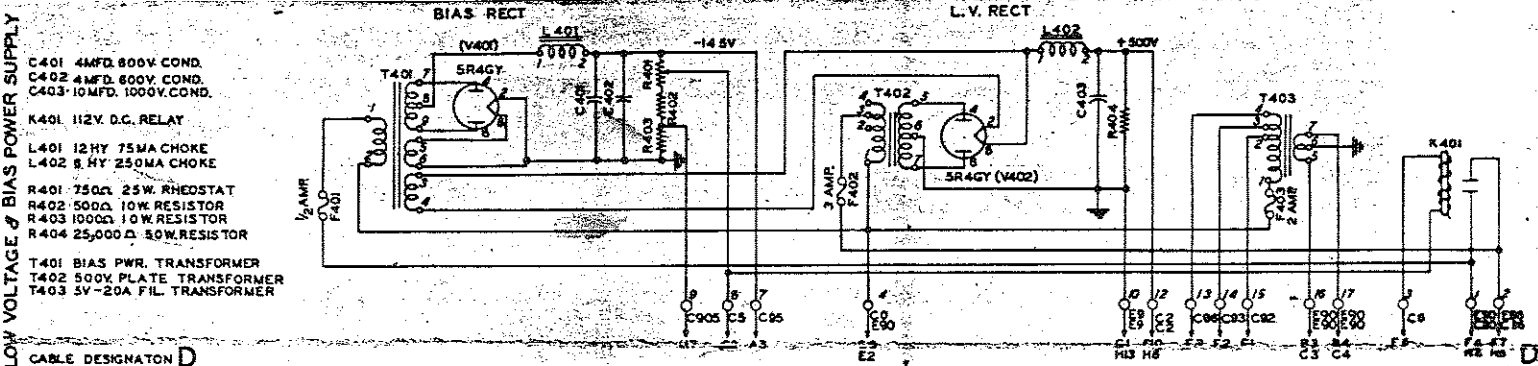
CABLE DESIGNATION **B**

SPEECH AMP. & MODULATOR



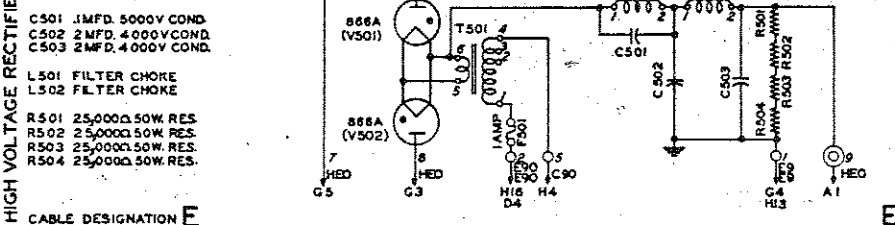
CABLE DESIGNATION **C**

LOW VOLTAGE & BIAS POWER SUPPLY

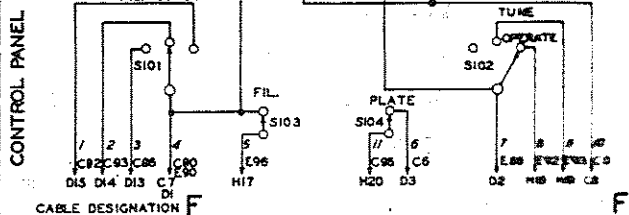


CABLE DESIGNATION **D**

HIGH VOLTAGE RECTIFIER

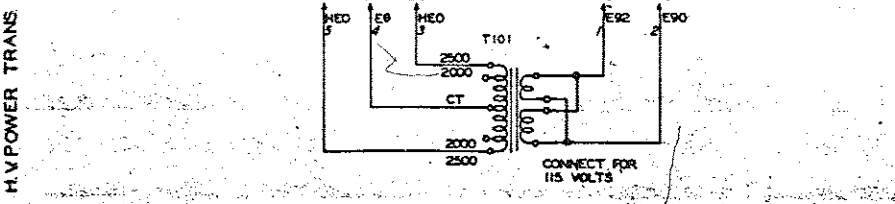


CABLE DESIGNATION **E**

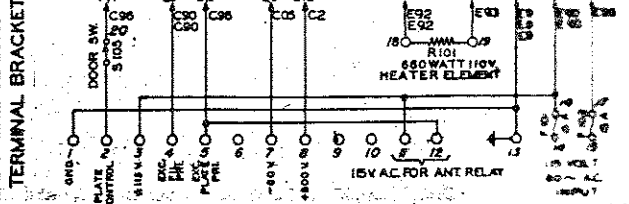


CABLE DESIGNATION **F**

H.V. POWER TRANS.



CABLE DESIGNATION **G**



CABLE DESIGNATION **H**

COLLINS 30K-1 AMATEUR TRANSMITTER

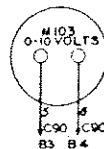
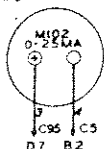
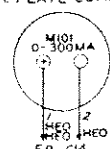
METER PANEL

P A. PLATE CURRENT

P A. GRID CURRENT

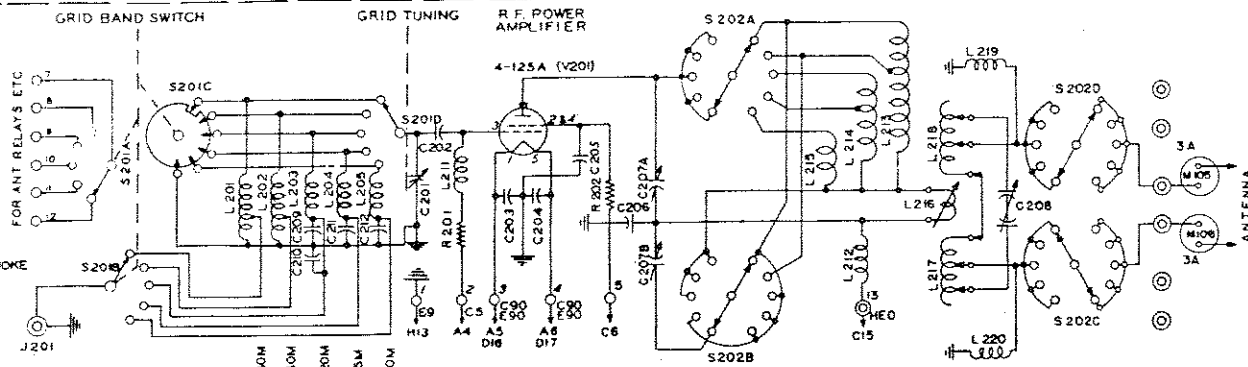
FILAMENT VOLTAGE

MOD PLATE CURRENT



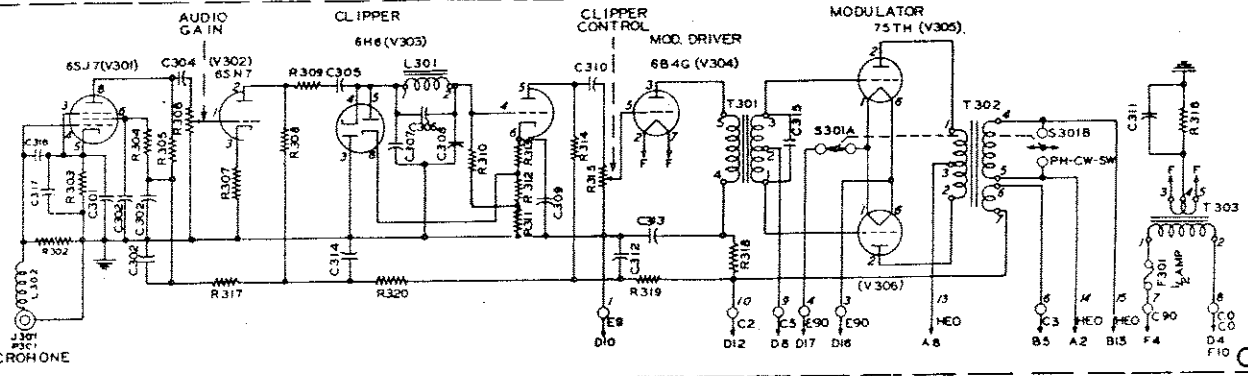
CABLE DESIGNATION A

R.F. PWR. AMP. TUBE & TANK CIRCUITS



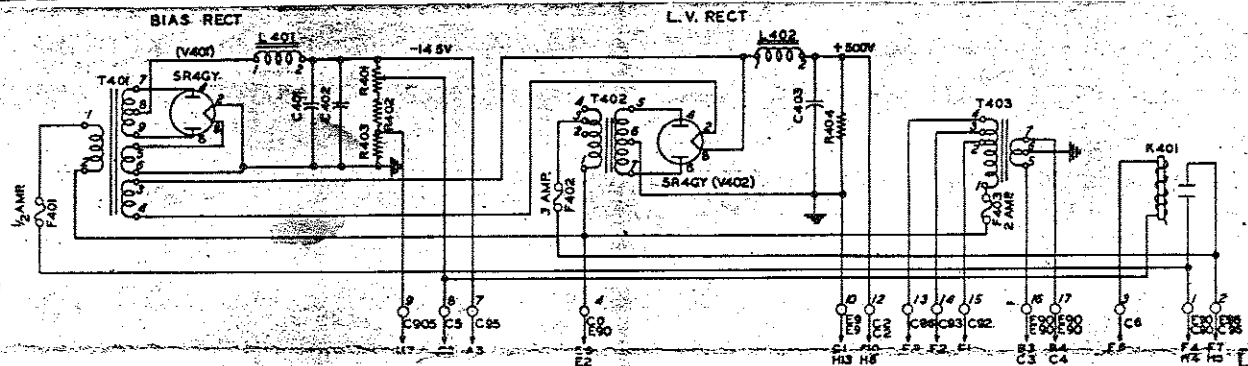
CABLE DESIGNATION B

SPEECH AMP. & MODULATOR



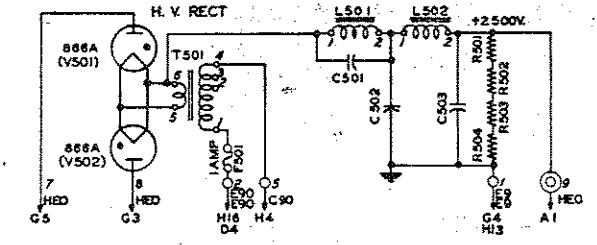
CABLE DESIGNATION C

LOW VOLTAGE & BIAS POWER SUPPLY

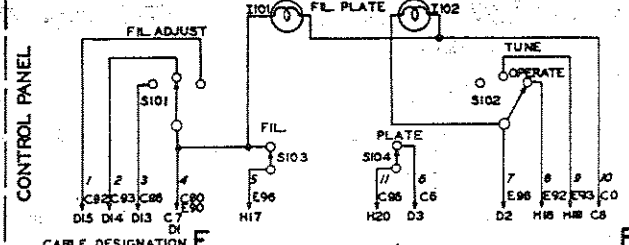


CABLE DESIGNATION D

HIGH VOLTAGE RECTIFIER

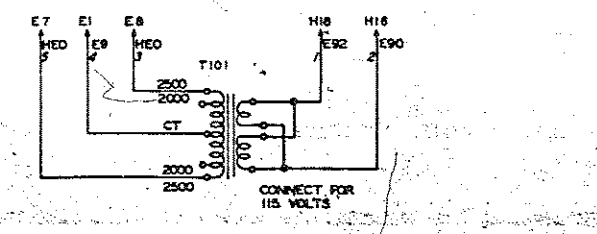


CABLE DESIGNATION E

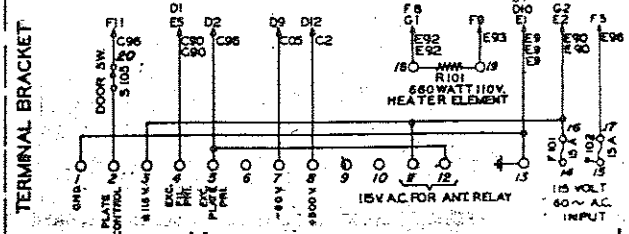


CABLE DESIGNATION F

H.V. POWER TRANS.



CABLE DESIGNATION G



CABLE DESIGNATION H

A

B

C

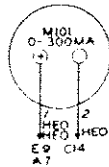
D

F

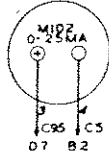
H

COLLINS 30K-1 AMATEUR TRANSMITTER

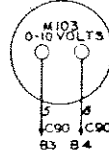
P A PLATE CURRENT



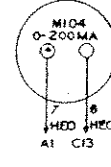
P A GRID CURRENT



FILAMENT VOLTAGE



MOD PLATE CURRENT

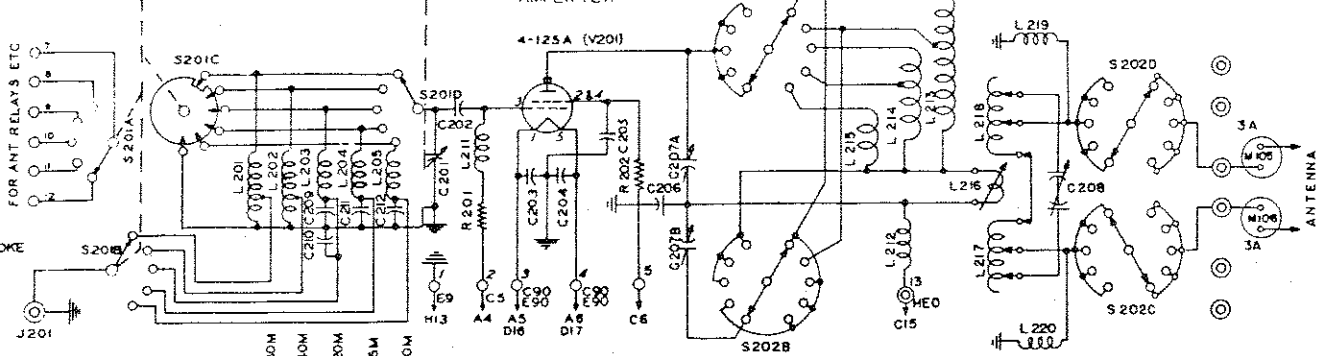


DESIGNATION A

GRID BAND SWITCH

GRID TUNING

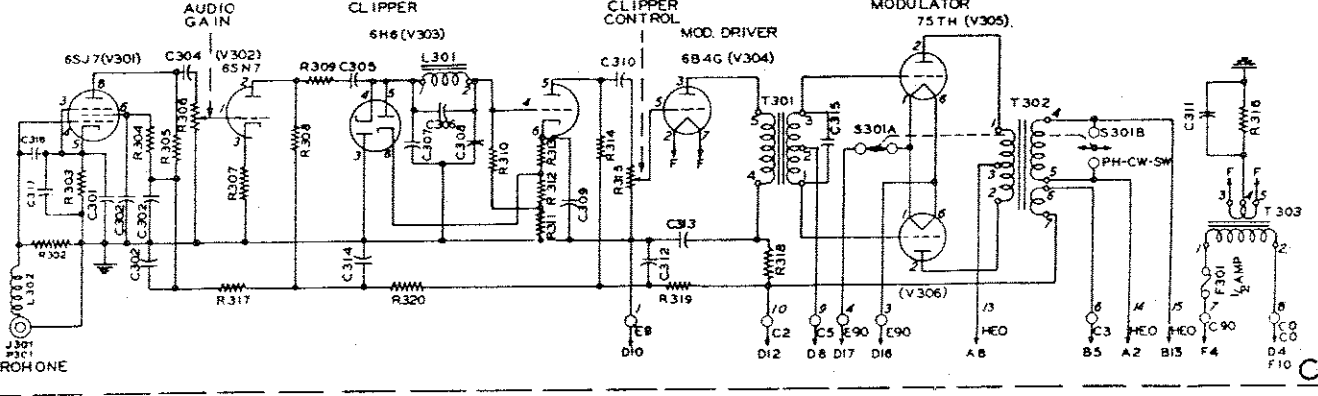
R.F. POWER AMPLIFIER



DESIGNATION B

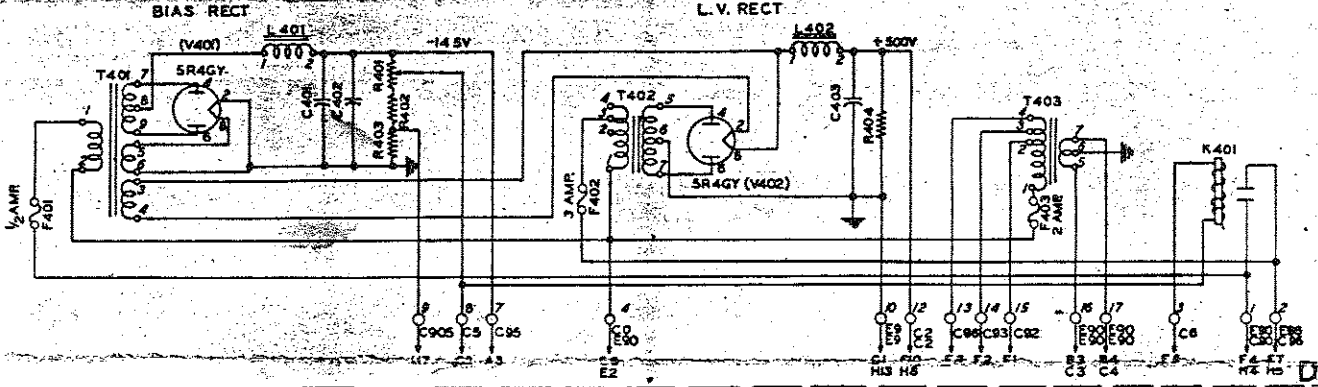
- 11 20MFD COND.
- 1-1-1 MFD COND.
- 5 .01 MFD. MICA CO. NO.
- 100MMFD. MICA CO. NO.
- 8 200 MMFD. MICA COND.
- 1 4MFD. COND.
- 13, 14 4MFD. COND.
- 4700 MMFD MICA COND.
- 100 MMFD MICA COND.
- 1000 MMFD MICA COND.
- 3.75 HY AUDIO REACTOR
- 3.8 J4H
- 10 MEG. 1/2 W. RES.
- 1000Ω. 1/2 W. RES.
- 470,000Ω. 1/2 W. RES.
- 10 100,000Ω. 1W. RES.
- 500,000Ω. POTENTIOMETER
- 1000Ω. 1W. RES.
- 4.4 00Ω. 2W. RES.
- 400,000Ω. 1/2 W. RES.
- 2 820Ω. 1W. RES.
- 330Ω. 1W. RES.
- 100,000Ω. POT.
- 750Ω. 10W. RES.
- 47,000Ω. 1W. RES.
- 4,000Ω. 50W. RES.
- 20,000Ω. 10W. RES.
- 4,700Ω. 2W. RES.

DESIGNATION C



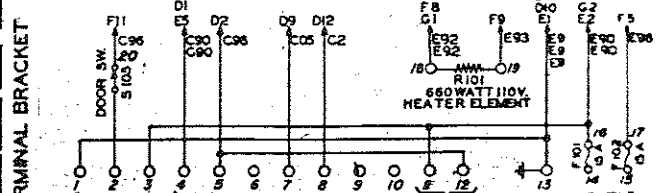
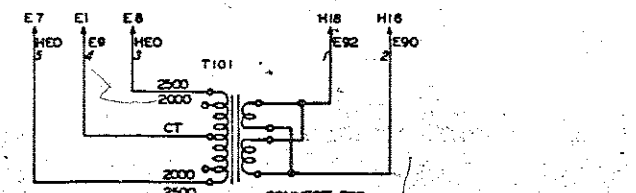
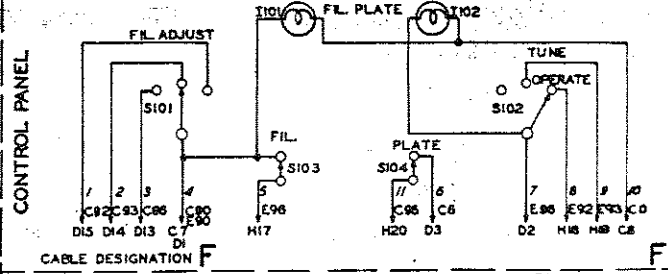
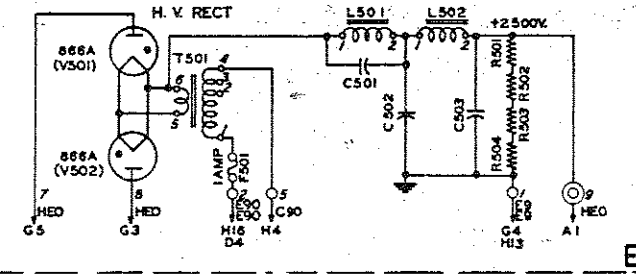
- 4MFD. 600V. COND.
- 4MFD. 600V. COND.
- 10MFD. 1000V. COND.
- 12V. D.C. RELAY
- 2HY 75MA CHOKE
- 1HY 250MA CHOKE
- 150Ω. 25W. RHEDSTAT
- 500Ω. 10W. RESISTOR
- 900Ω. 10W. RESISTOR
- 25,000Ω. 50W. RESISTOR
- BIAS PWR. TRANSFORMER
- 500V. PLATE TRANSFORMER
- 5V-20A. FIL. TRANSFORMER

DESIGNATION D



- 1MFD. 5000V. COND.
- 2MFD. 4000V. COND.
- 2MFD. 4000V. COND.
- FILTER CHOKE
- FILTER CHOKE
- 25,000Ω. 50W. RES.
- 25,000Ω. 50W. RES.
- 25,000Ω. 50W. RES.
- 25,000Ω. 50W. RES.

DESIGNATION E



COLLINS 30K-1 AMATEUR TRANSMITTER

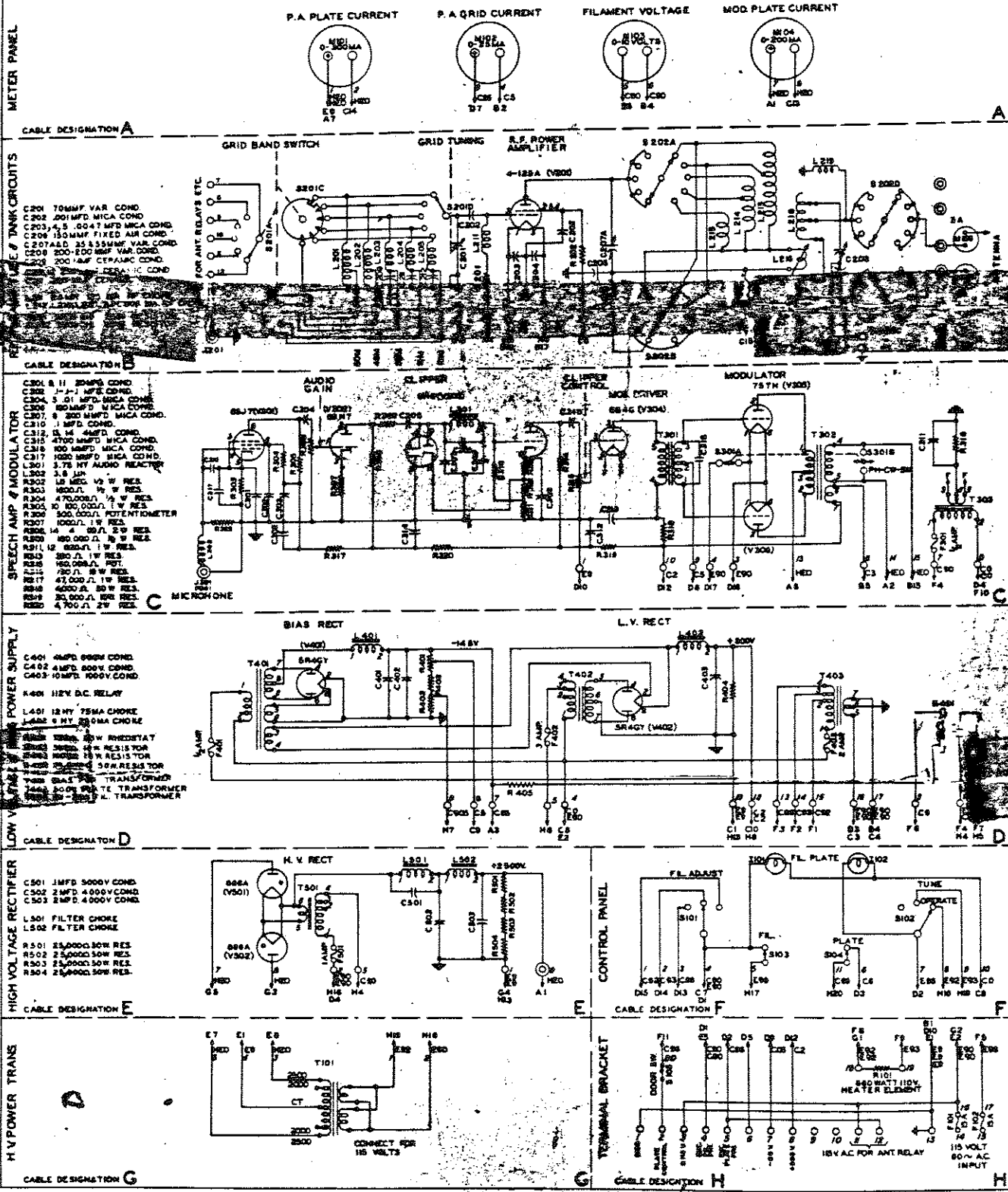
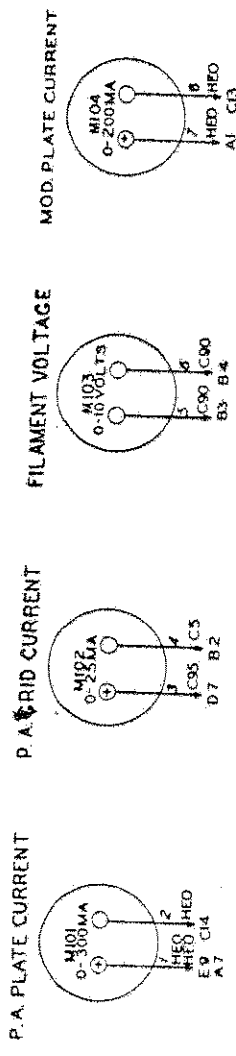
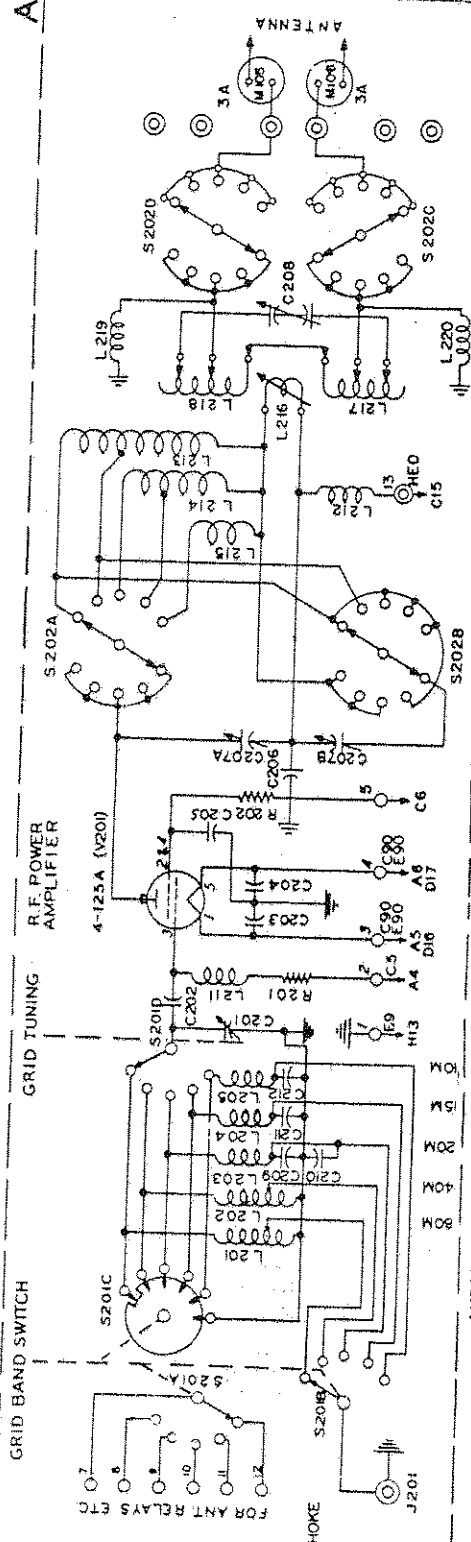


Figure 8-13 Transmitter Schematic Diagram

COLLINS 30K-1 AMATEUR TRANSMITTER

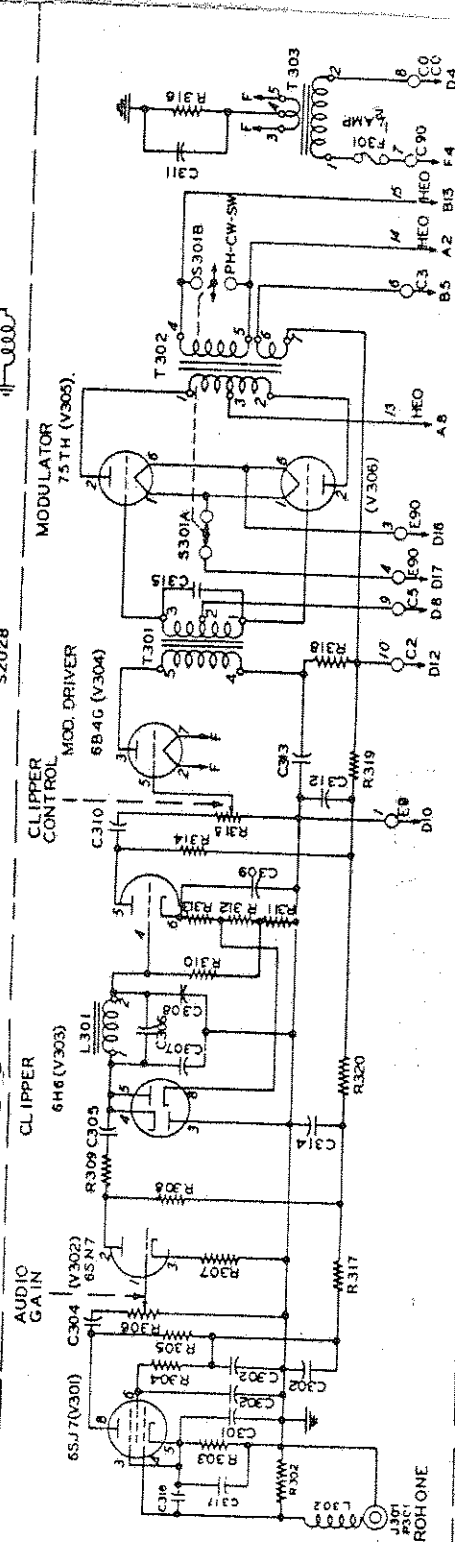


CABLE DESIGNATION A



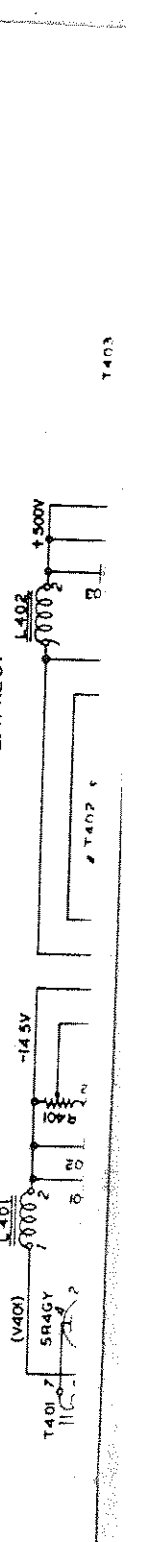
- TANK CIRCUIT**
- C201 70MMF VAR COND
 - C202 .001MFD MICA COND
 - C203 4-5 .0047 MFD MICA COND
 - C206 150MMF FIXED AIR COND
 - C207A,B 35-5.5MMF VAR COND
 - C208 200-200 MMF VAR COND
 - C209 200 MMF CERAMIC COND
 - C210,12 250 MMF CERAMIC COND
 - C211 300 MMF CERAMIC COND
 - L201 2.5MH 125 MA. RF CHOKE
 - L212,L219,L220,MMH,600 MA. RF CHOKE
 - R201 5000 OHM 2.5W RESISTOR
 - R202 5000-OHM 50W RESISTOR

CABLE DESIGNATION B



- MODULATOR**
- C301 9-11 20MFD COND
 - C302 1-1.1 MFD COND
 - C304 5 .01 MFD MICA COND
 - C305 100MMFD MICA COND
 - C306 100MMFD MICA COND
 - C307 8 200MMFD MICA COND
 - C310 1 MFD COND
 - C312 13,14 4MFD COND
 - C315 4700 MMFD MICA COND
 - C316 100 MMFD MICA COND
 - C317 1000 MMFD MICA COND
 - L301 3.75 HY AUDIO REACTOR
 - L302 3.8 UH
 - R302 10 MEG. 1/2 W RES
 - R303 1000 Ω 1/2 W RES
 - R304 470,000 Ω 1/2 W RES
 - R305 10 100,000 Ω 1/2 W RES
 - R306 500,000 Ω POTENTIOMETER
 - R307 1000 Ω 1 W RES
 - R308,14 4 00 Ω 2 W RES
 - R309 100,000 Ω 1/2 W RES
 - R311,12 920 Ω 1 W RES
 - R313 330 Ω 1 W RES
 - R315 100,000 Ω POT
 - R316 750 Ω 10 W RES
 - R317 47,000 Ω 1 W RES
 - R318 4000 Ω 1 W RES
 - R319 20,000 Ω 10 W RES
 - R320 4,700 Ω 2 W RES

CABLE DESIGNATION C

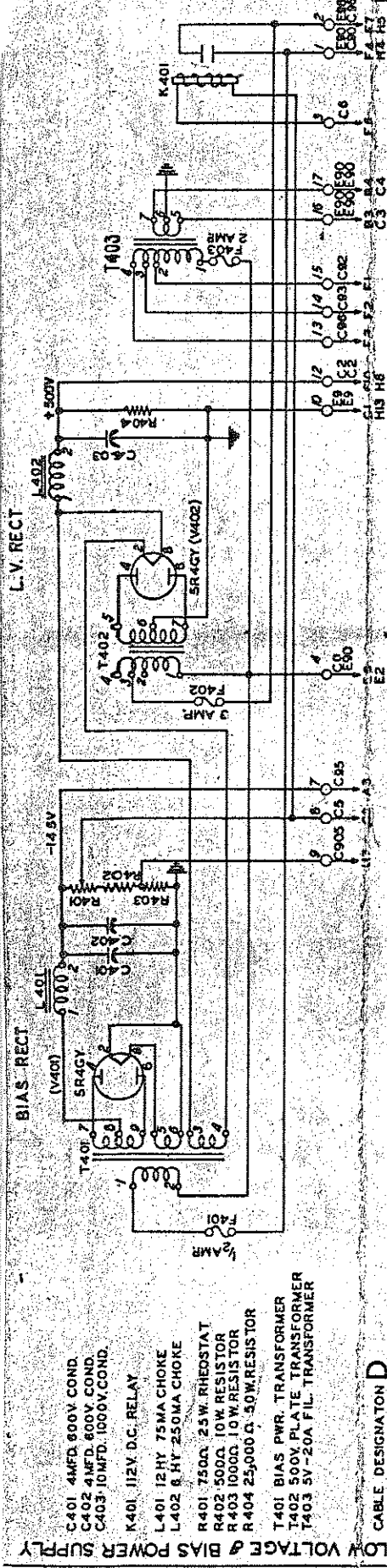


- SUPPLY**
- C401 4MFD 600V COND
 - C402 4MFD 600V COND
 - L401 500 Ω
 - L402 500 Ω
 - T401 5R4CY

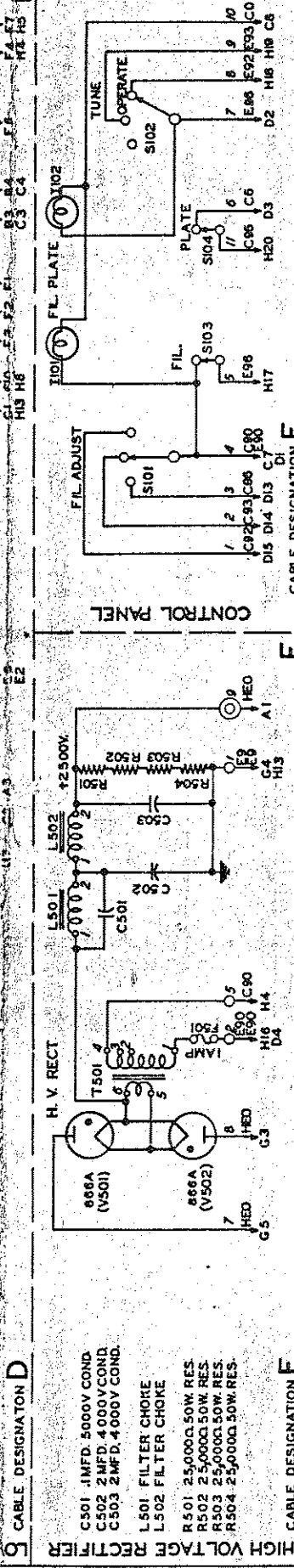
METER PANEL

PH-CW-SW

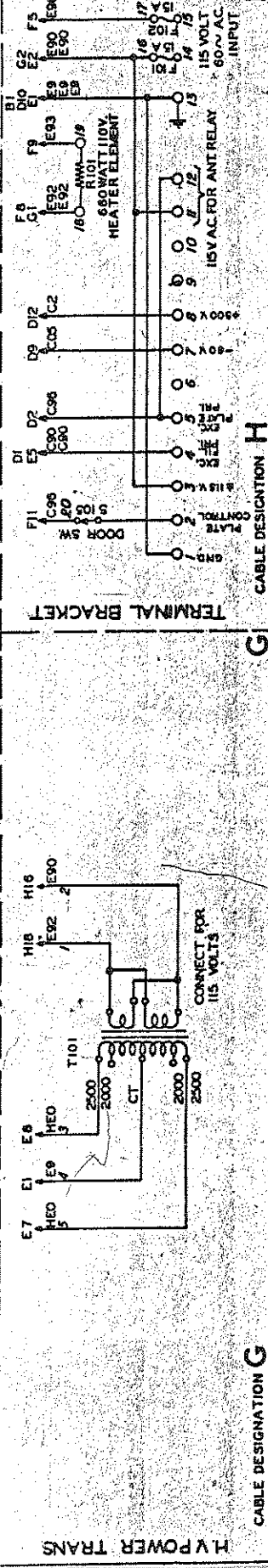
T403



- LOW VOLTAGE & BIAS POWER SUPPLY**
- C401 4MFD. 800V COND.
 - C402 4MFD. 800V COND.
 - C403 10MFD. 1000V COND.
 - K401 112V D.C. RELAY
 - L401 12HY 75MA CHOKE
 - L402 6HY 250MA CHOKE
 - R401 750Ω 25W RHEOSTAT
 - R402 500Ω 10W RESISTOR
 - R403 100Ω 10W RESISTOR
 - R404 25,000Ω .50W RESISTOR
 - T401 BIAS PWR. TRANSFORMER
 - T402 500V PLATE TRANSFORMER
 - T403 5V-20A FIL. TRANSFORMER



- HIGH VOLTAGE RECTIFIER**
- C501 .1MFD. 500V COND.
 - C502 2MFD. 4000V COND.
 - C503 2MFD. 4000V COND.
 - L501 FILTER CHOKE
 - L502 FILTER CHOKE
 - R501 25,000Ω .50W RES.
 - R502 25,000Ω .50W RES.
 - R503 25,000Ω .50W RES.
 - R504 25,000Ω .50W RES.



- H.V. POWER TRANS**
- C501 .1MFD. 500V COND.
 - C502 2MFD. 4000V COND.
 - C503 2MFD. 4000V COND.
 - L501 FILTER CHOKE
 - L502 FILTER CHOKE
 - R501 25,000Ω .50W RES.
 - R502 25,000Ω .50W RES.
 - R503 25,000Ω .50W RES.
 - R504 25,000Ω .50W RES.

L.V. RECT

BIAS-RECT

CONTROL PANEL

CABLE DESIGNATION E

TERMINAL BRACKET

CABLE DESIGNATION H

LOW VOLTAGE & BIAS POWER SUPPLY

HIGH VOLTAGE RECTIFIER

H.V. POWER TRANS

L.V. RECT

BIAS-RECT

CONTROL PANEL

CABLE DESIGNATION E

TERMINAL BRACKET

CABLE DESIGNATION H

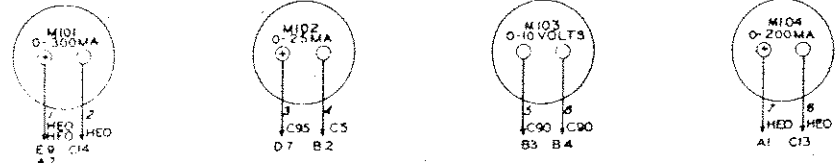
LOW VOLTAGE & BIAS POWER SUPPLY

HIGH VOLTAGE RECTIFIER

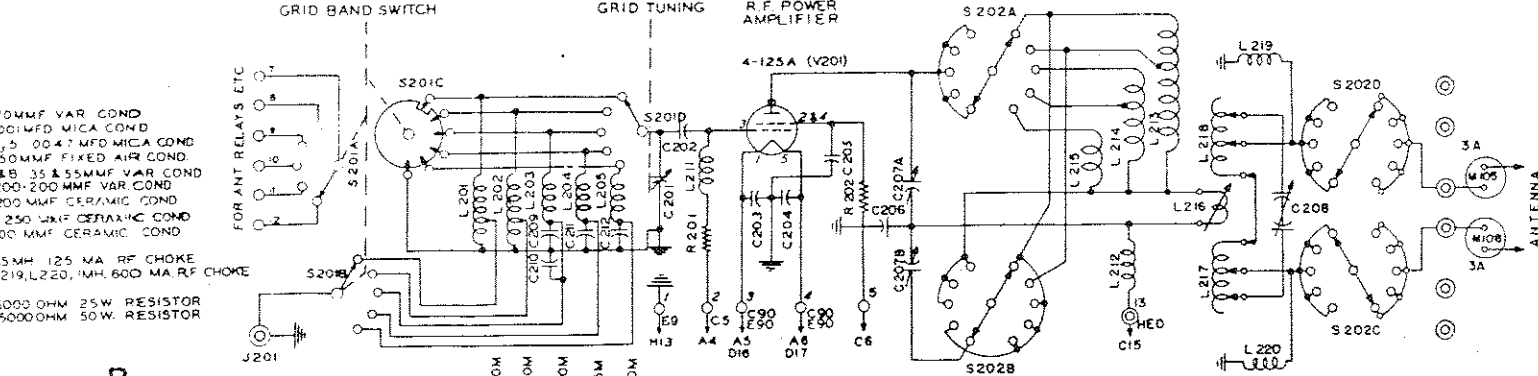
H.V. POWER TRANS

COLLINS 30K-1 AMATEUR TRANSMITTER

P A PLATE CURRENT P A GRID CURRENT FILAMENT VOLTAGE MOD PLATE CURRENT



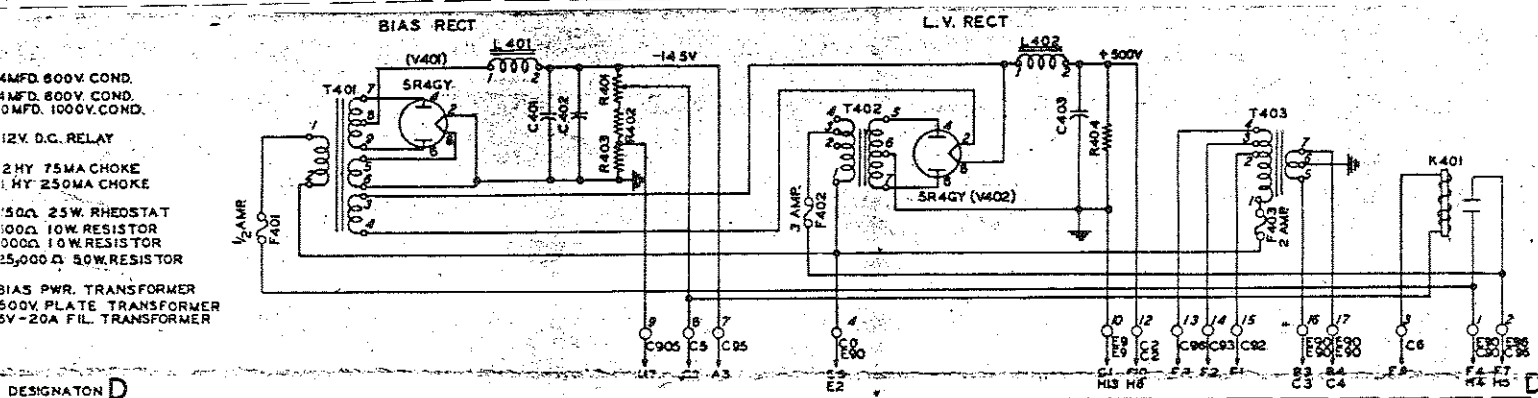
DESIGNATION A



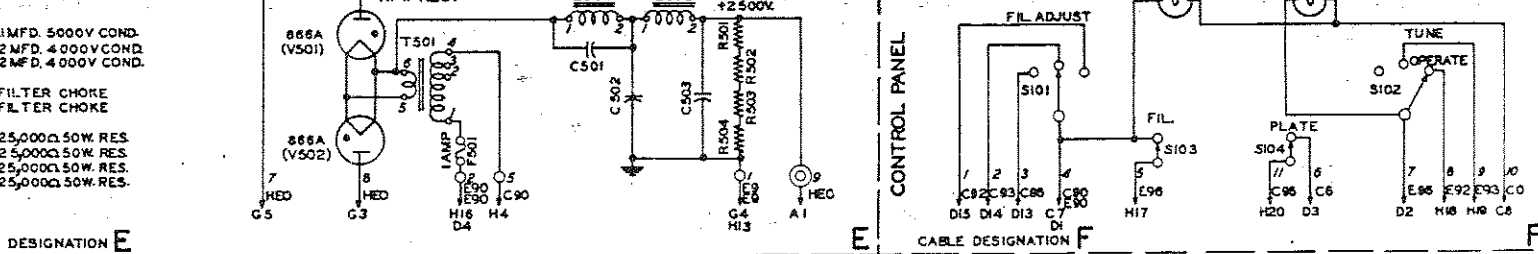
DESIGNATION B

- 11 20MFD COND.
- 1-1-1 MFD COND.
- 5 .01 MFD MICA COND.
- 180MMFD MICA COND.
- 5 200MMFD MICA COND.
- 1 MFD COND.
- 3 .14 4MFD COND.
- 4700 MMFD MICA COND.
- 100 MMFD MICA COND.
- 1000 MMFD MICA COND.
- 3.75 HY AUDIO REACTOR
- 3.8 μH
- 10 MEG 1/2 W RES
- 1000 Ω 1/2 W RES
- 470,000 Ω 1/2 W RES
- 0 100,000 Ω 1 W RES
- 500,000 Ω POTENTIOMETER
- 1000 Ω 1 W RES.
- 4 4 00 Ω 2 W RES.
- 100,000 Ω 1/2 W RES.
- 330 Ω 1 W RES
- 100,000 Ω POT
- 750 Ω 10 W RES.
- 47,000 Ω 1 W RES.
- 4,000 Ω 50 W RES.
- 20,000 Ω 10 W RES.
- 4,700 Ω 2 W RES.

DESIGNATION C



DESIGNATION D



DESIGNATION E



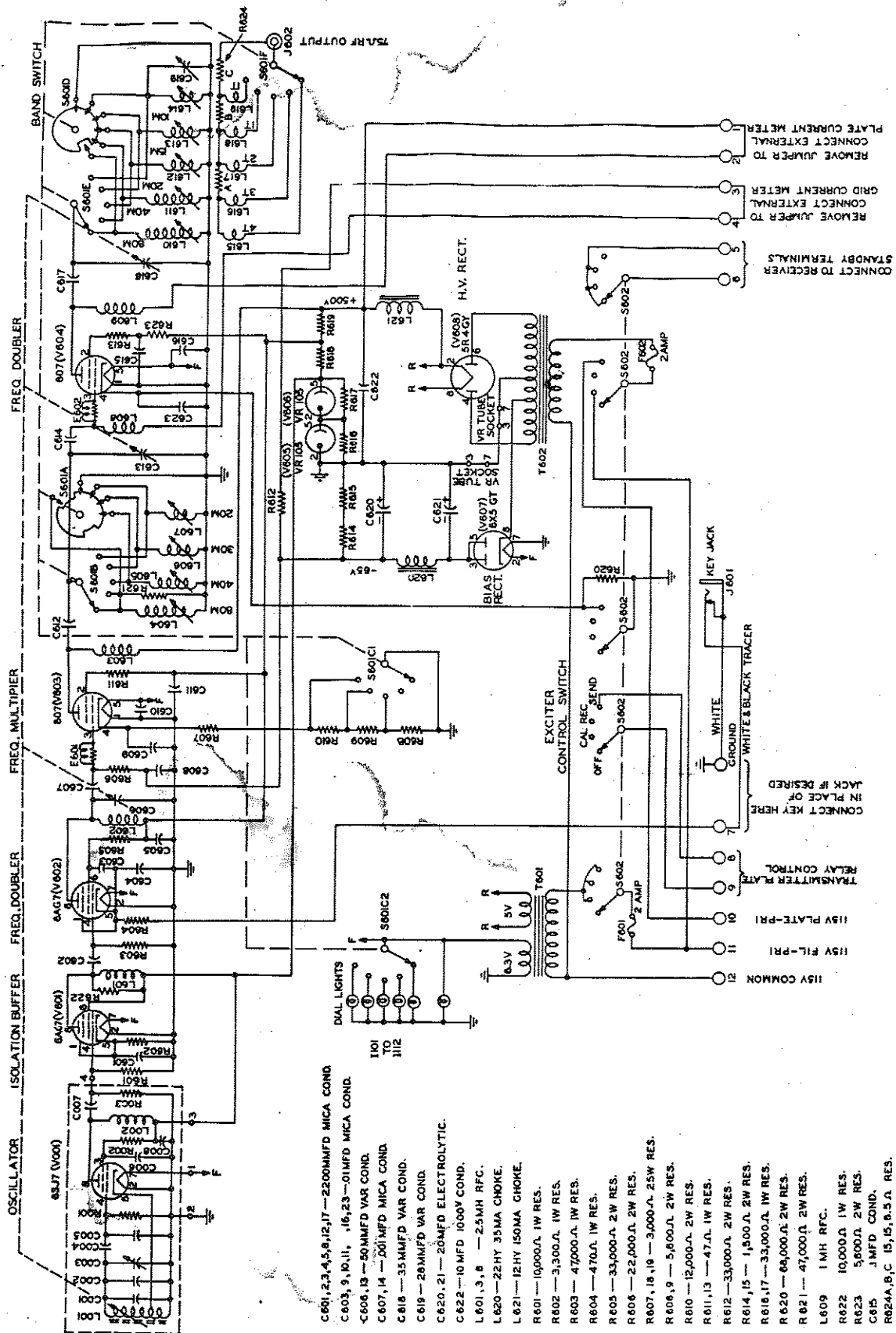
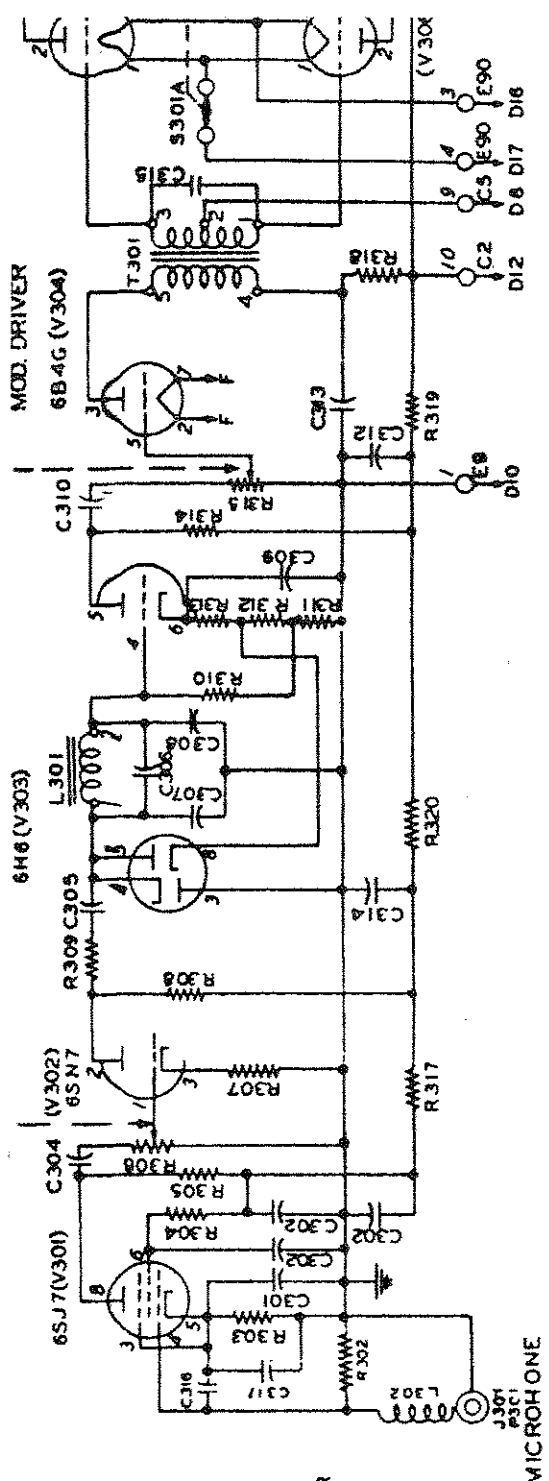
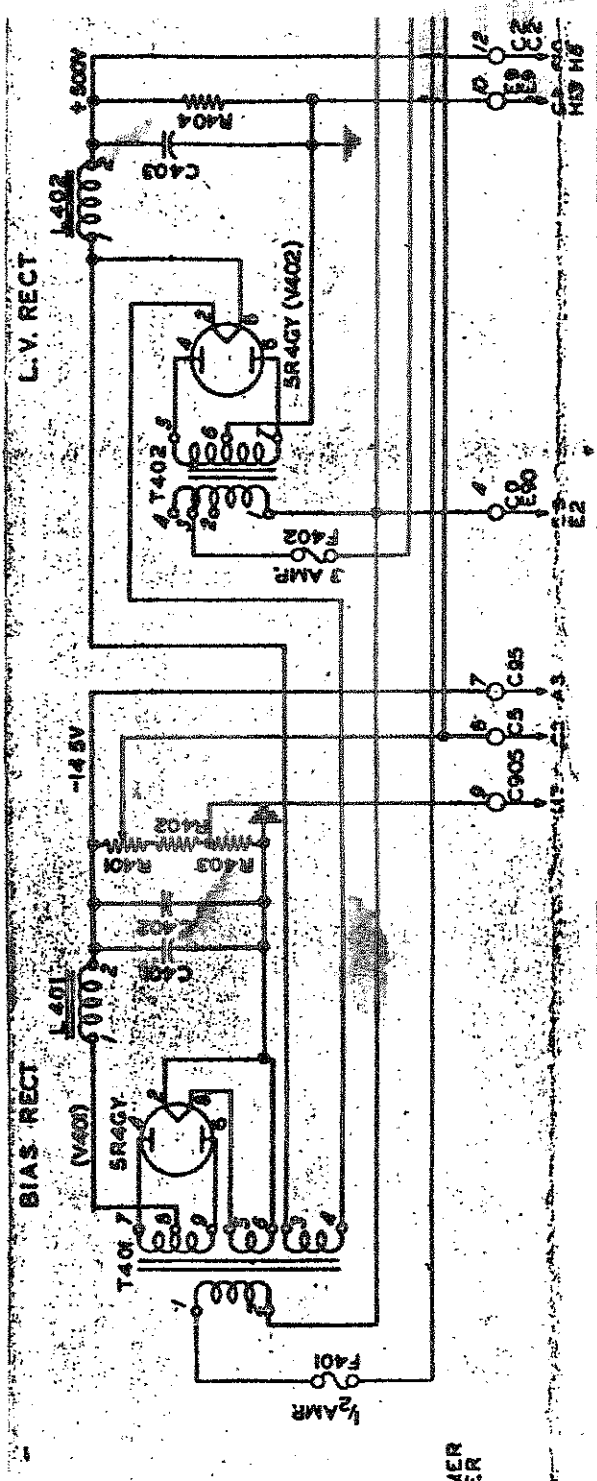


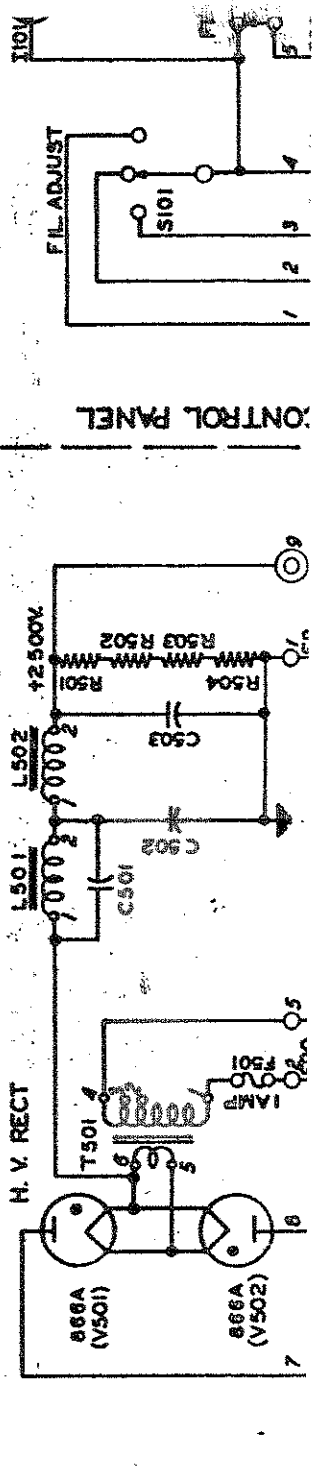
Figure 8-14 310A Exciter Unit Schematic Diagram



- S-FRECH AMP & MODULATOR**
- C302 1.5 MFD. COND.
 - C304 5.01 MFD. MICA COND.
 - C306 180MMFD. MICA COND.
 - C307 8.200MMFD. MICA COND.
 - C310 1 MFD. COND.
 - C312 13, 14 4MFD. COND.
 - C315 4700 MMFD. MICA COND.
 - C316 100 MMFD. MICA COND.
 - C317 1000 MMFD. MICA COND.
 - L301 3.75 HY AUDIO REACTOR
 - L302 3.8 μH
 - R302 1.0 MEG. 1/2 W. RES.
 - R303 1000 Ω 1/2 W. RES.
 - R304 470,000 Ω 1/2 W. RES.
 - R305 10, 100, 000 Ω 1 W. RES.
 - R306 500,000 Ω POTENTIOMETER
 - R307 10,000 Ω 1 W. RES.
 - R308 14 4 00 Ω 2 W. RES.
 - R309 100,000 Ω 1/2 W. RES.
 - R311 12 620 Ω 1 W. RES.
 - R313 330 Ω 1 W. RES.
 - R315 100,000 Ω POT.
 - R316 750 Ω 1 W. RES.
 - R317 47,000 Ω 1 W. RES.
 - R318 4,000 Ω 50 W. RES.
 - R319 20,000 Ω 10 W. RES.
 - R320 4,700 Ω 2 W. RES.

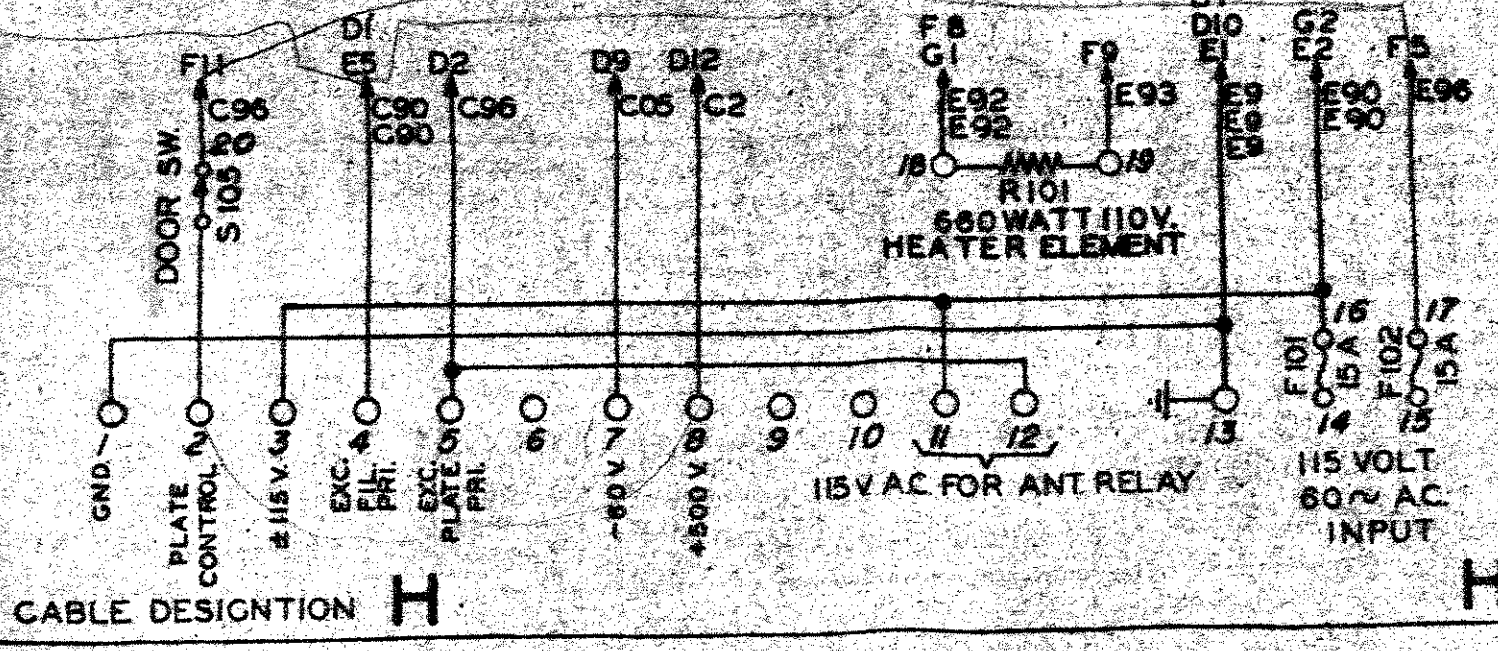
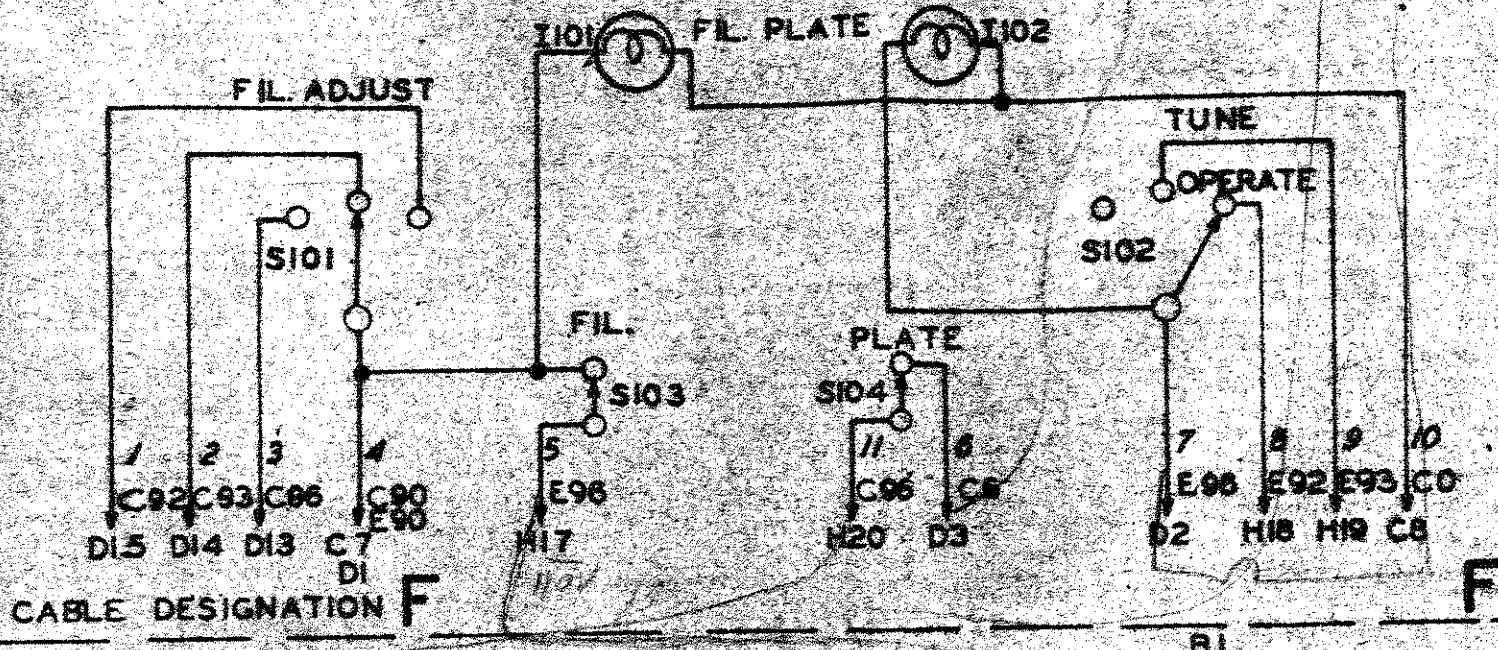
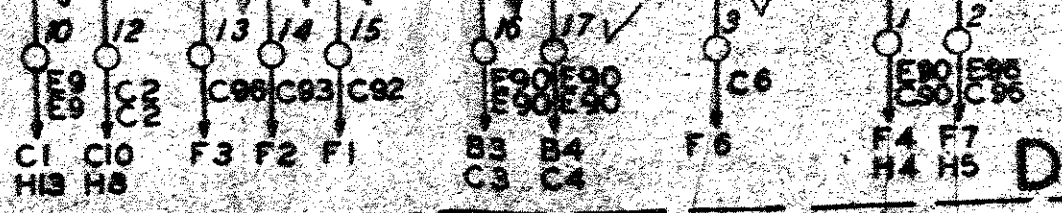


- LOW VOLTAGE & BIAS POWER SUPPLY**
- C401 4MFD. 600V COND.
 - C402 4MFD. 600V COND.
 - C403 10MFD. 1000V COND.
 - K401 112V. D.C. RELAY
 - L401 12 HY 75MA CHOKE
 - L402 8 HY 250MA CHOKE
 - R401 750 Ω 25W. RHOESTAT
 - R402 500 Ω 10W. RESISTOR
 - R403 1000 Ω 10W. RESISTOR
 - R404 25,000 Ω 50W. RESISTOR
 - T401 BIAS PWR. TRANSFORMER
 - T402 500V. PLATE TRANSFORMER
 - T403 5V-20A FIL. TRANSFORMER



- VOLTAGE RECTIFIER**
- C501 1MFD. 5000V COND.
 - C502 2MFD. 4000V COND.
 - C503 2MFD. 4000V COND.
 - L501 FILTER CHOKE
 - L502 FILTER CHOKE
 - R501 25,000 Ω 50W. RES.
 - R502 25,000 Ω 50W. RES.
 - R503 25,000 Ω 50W. RES.
 - R504 25,000 Ω 50W. RES.

CABLE DESIGNATION D



LOW VOLT

T402 500V. PLATE TRANSFORMER
T403 5V-20A FIL. TRANSFORMER

CABLE DESIGNATION **D**

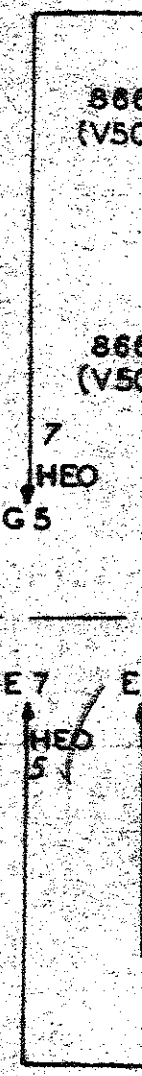
HIGH VOLTAGE RECTIFIER

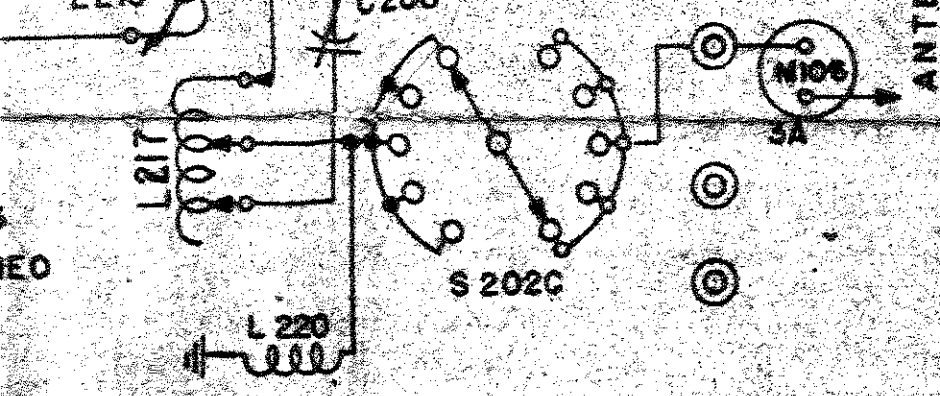
- C501 .1MFD. 5000V COND.
- C502 2MFD. 4000V COND.
- C503 2MFD. 4000V COND.
- L501 FILTER CHOKE
- L502 FILTER CHOKE
- R501 25,000Ω 50W. RES.
- R502 25,000Ω 50W. RES.
- R503 25,000Ω 50W. RES.
- R504 25,000Ω 50W. RES.

CABLE DESIGNATION **E**

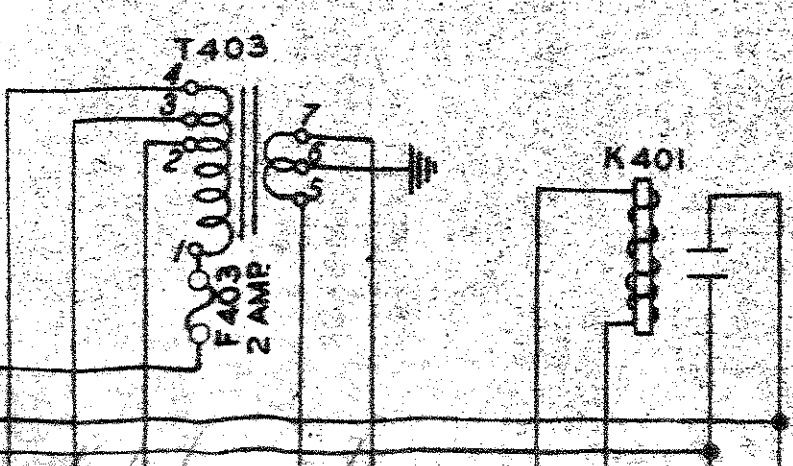
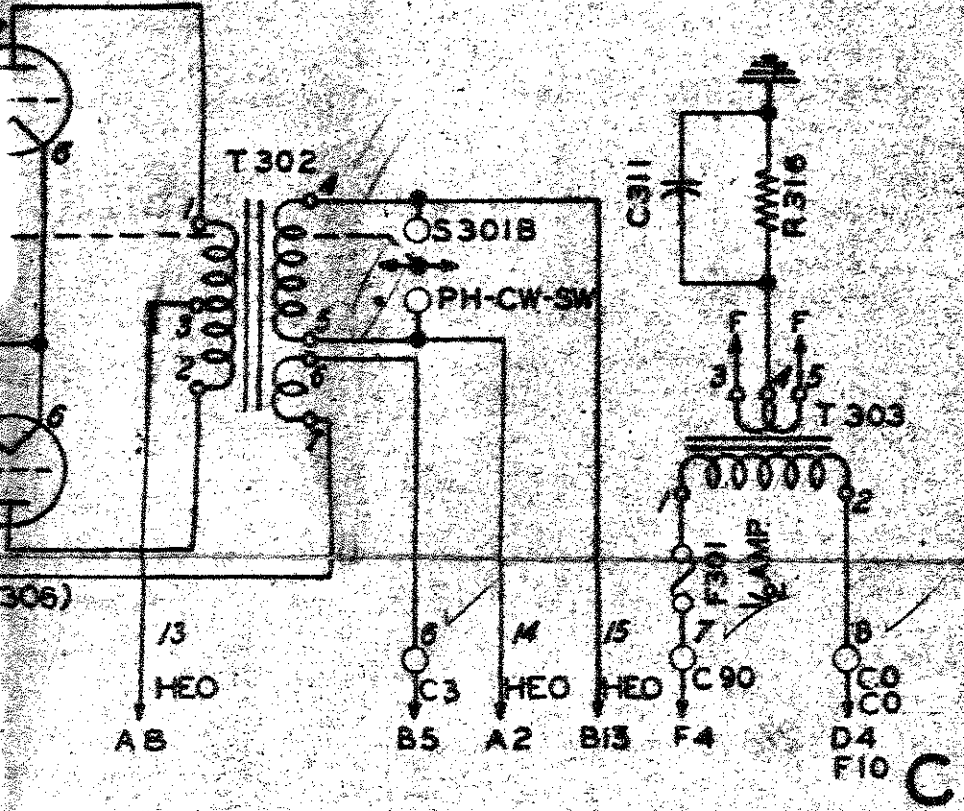
H.V. POWER TRANS.

CABLE DESIGNATION **G**





LATOR
 75TH (V305)



USED ON
30K-1

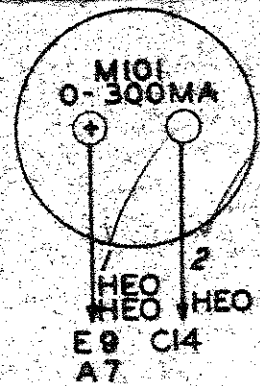
-- RATING --

COLLINS RADIO COMPANY
CEDAR RAPIDS, IOWA U.S.A.

COLLINS 30K-1 AM

P. A. PLATE CURRENT

P. A. GRID

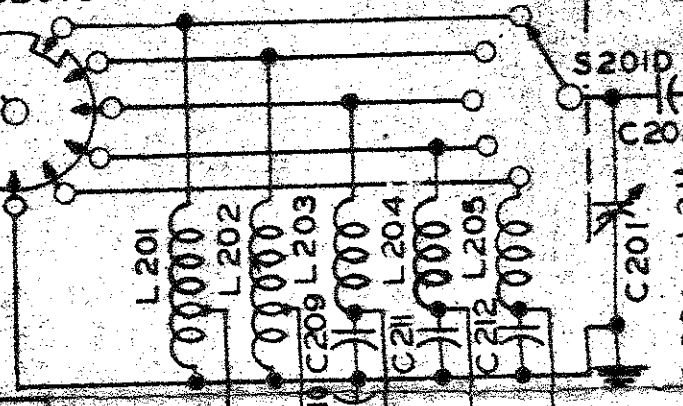
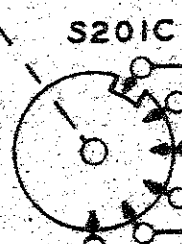
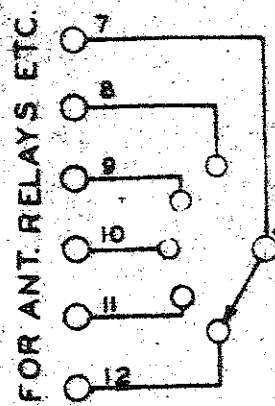


IGNATION **A**

GRID BAND SWITCH

GRID TUNING

- MF. VAR. COND.
- MFD. MICA COND.
- .0047 MFD MICA COND.
- MF. FIXED AIR COND.
- 35 & 55MMF VAR. COND.
- 200 MMF VAR. COND.
- MMF CERAMIC COND.
- MMF CERAMIC COND.
- MMF CERAMIC COND.
- 125 MA. RF CHOKE



RADIO

ASSY NAME

30K-1 SCHEMATIC

U.S.A.

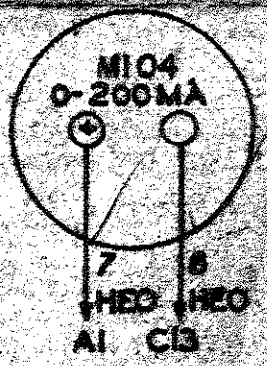
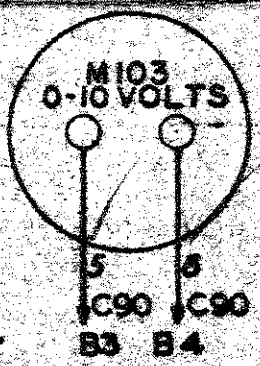
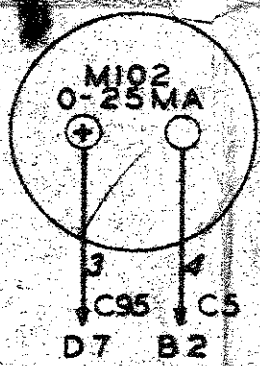
ASSY FINISH

AMATEUR TRANSMITTER

P. A. GRID CURRENT

FILAMENT VOLTAGE

MOD PLATE CURRENT

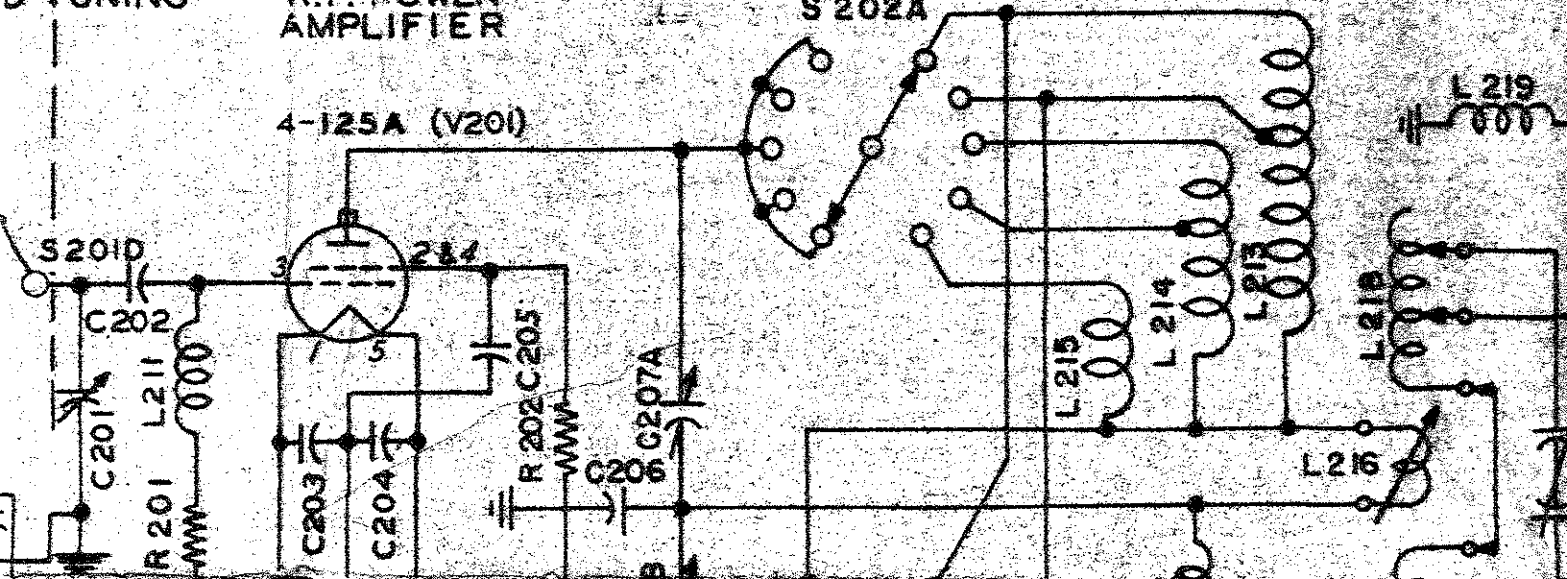


D. TUNING

R.F. POWER AMPLIFIER

4-125A (V201)

S 202A



USED ON
30K-1

COLL

METER PANEL

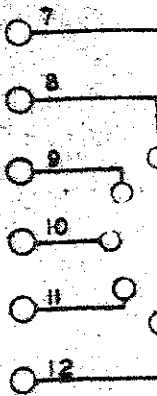
CABLE DESIGNATION **A**

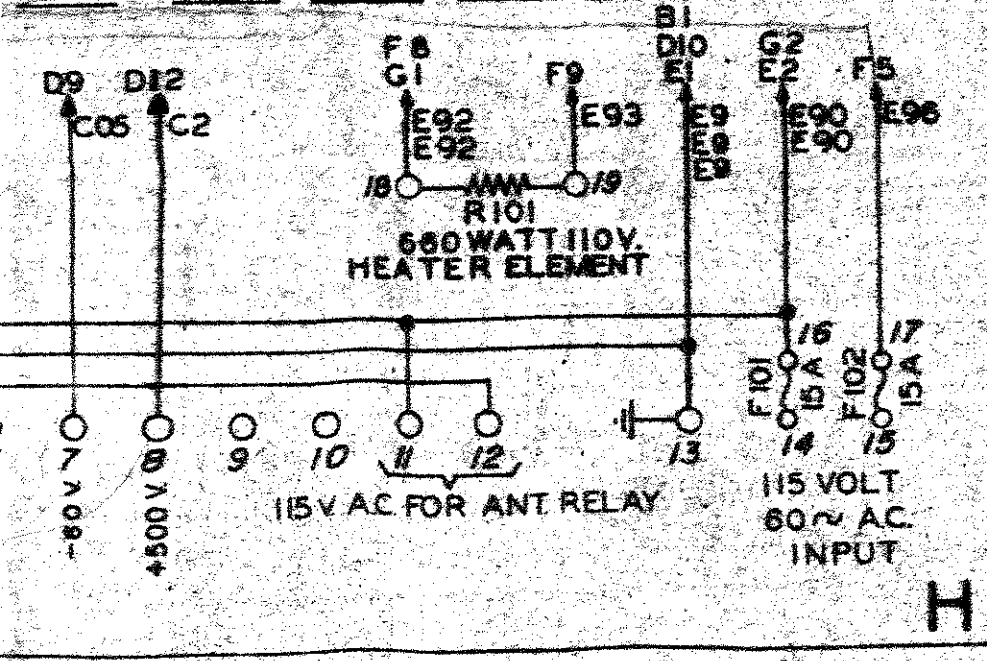
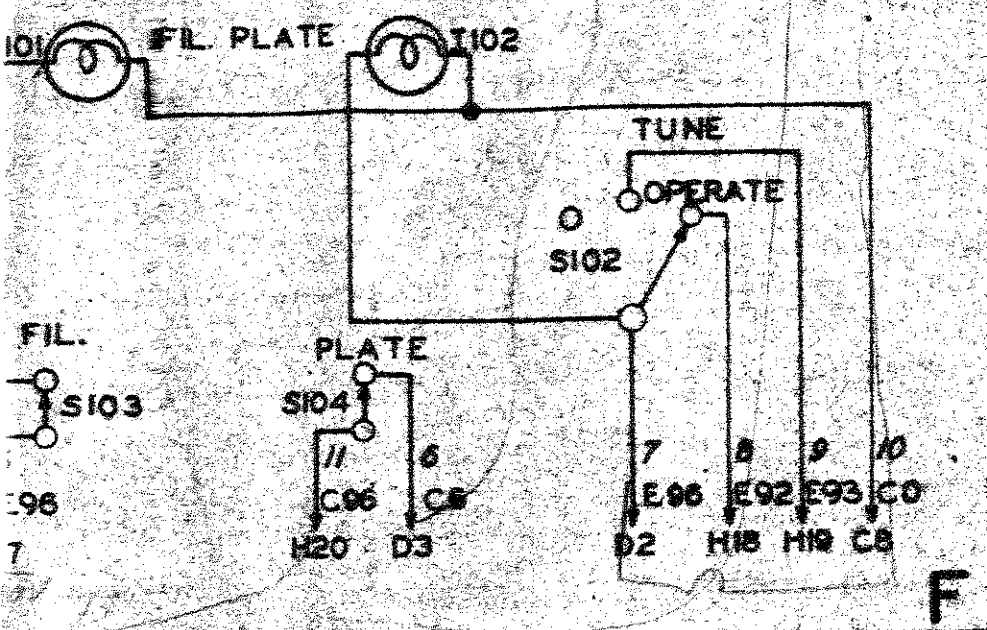
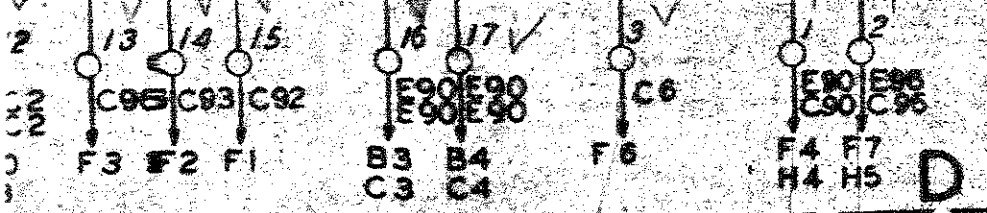
P TUBE & TANK CIRCUITS

- C201 70MMF. VAR. COND.
- C202 .001MFD. MICA COND.
- C203, 4, 5 .0047 MFD MICA COND.
- C206 150MMF. FIXED AIR COND.
- C207A&B 35 & 55MMF VAR. COND.
- C208 200-200 MMF VAR. COND.
- C209 200 MMF CERAMIC COND.
- C210, 12 250 MMF CERAMIC COND.
- C211 300 MMF CERAMIC COND.

GRID

FOR ANT. RELAYS ETC.





D18857	6/2-97	1
REVISION NO.	DATE	ALT NO.

NUMBER

503 3536 005

DESIGNER

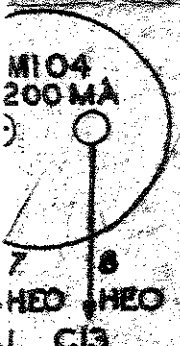
DETAILER: BEE CHECKED BY:

APPROVED BY: *WOB* DATE: 3-3-47 SCALE

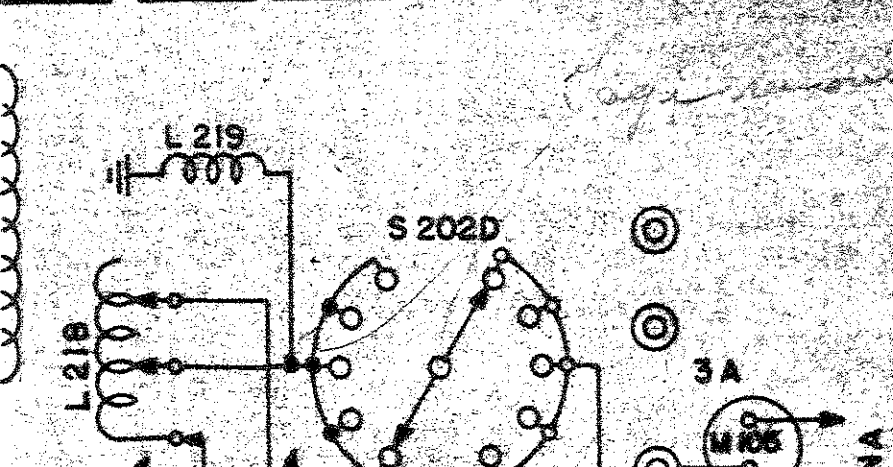
FOR REFERENCE ONLY
DATE: _____ MAILED TO: _____

TER

TE CURRENT

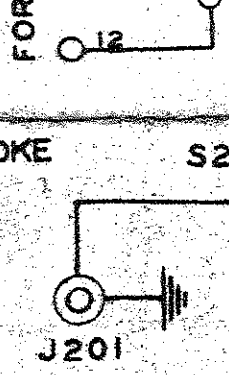


A



R.F. PWR. AMP TUBE

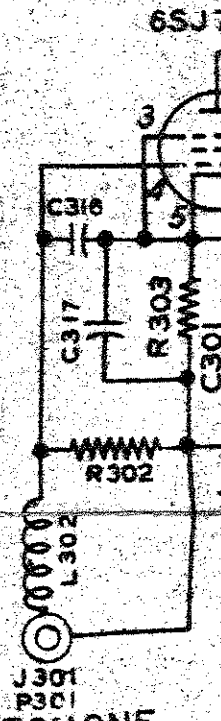
- C210,12 250 MMF CERAMIC COND.
- C211 300 MMF CERAMIC COND.
- L211 25MH 125 MA RF CHOKE
- L212,L219,L220, 1MH. 600 MA RF CHOKE
- R201 5000.OHM 25W. RESISTOR
- R202 5000OHM 50W. RESISTOR



CABLE DESIGNATION **B**

SPEECH AMP & MODULATOR

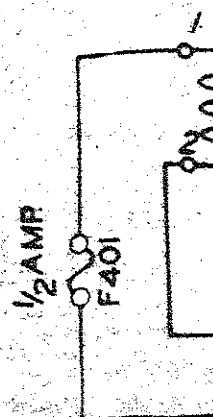
- C301 9, 11 20MFD. COND.
- C302 1-1-1 MFD. COND.
- C304 5 .01 MFD. MICA COND.
- C306 180MMFD MICA COND.
- C307 8 200 MMFD MICA COND.
- C310 .1 MFD. COND.
- C312, 13, 14 4MFD. COND.
- C315 4700 MMFD MICA COND.
- C316 100 MMFD MICA COND.
- C317 1000 MMFD MICA COND.
- L301 3.75 HY AUDIO REACTOR
- L302 3.8 μh
- R302 1.0 MEG. 1/2 W RES.
- R303 1000Ω 1/2 W RES.
- R304 470,000Ω 1/2 W RES.
- R305 10 100,000Ω 1 W RES.
- R306 500,000Ω POTENTIOMETER
- R307 1000Ω 1 W RES.
- R308, 14 4 00Ω 2 W RES.
- R309 100,000 Ω 1/2 W RES.
- R311, 12 620 Ω 1 W RES.
- R313 330 Ω 1 W RES.
- R315 100,000Ω POT.
- R316 750Ω 10 W RES.
- R317 47,000 Ω 1 W RES.
- R318 4,000 Ω 50 W RES.
- R319 20,000 Ω 10 W RES.
- R320 4,700 Ω 2 W RES.

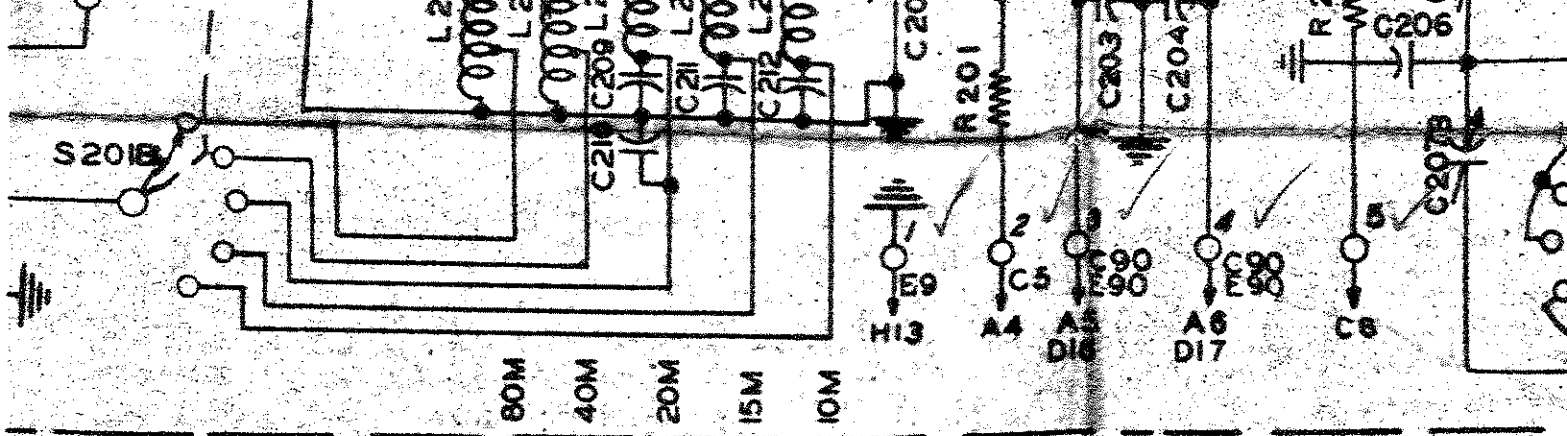


C MICROPHONE

GE & BIAS POWER SUPPLY

- C401 4MFD. 600V COND.
- C402 4MFD. 600V COND.
- C403 10MFD. 1000V COND.
- K401 112V. D.C. RELAY
- L401 12HY 75MA CHOKE
- L402 6 HY 250MA CHOKE
- R401 750Ω 25W RHEOSTAT
- R402 500Ω 10W RESISTOR
- R403 1000Ω 10W RESISTOR
- R404 25,000 Ω 50W RESISTOR

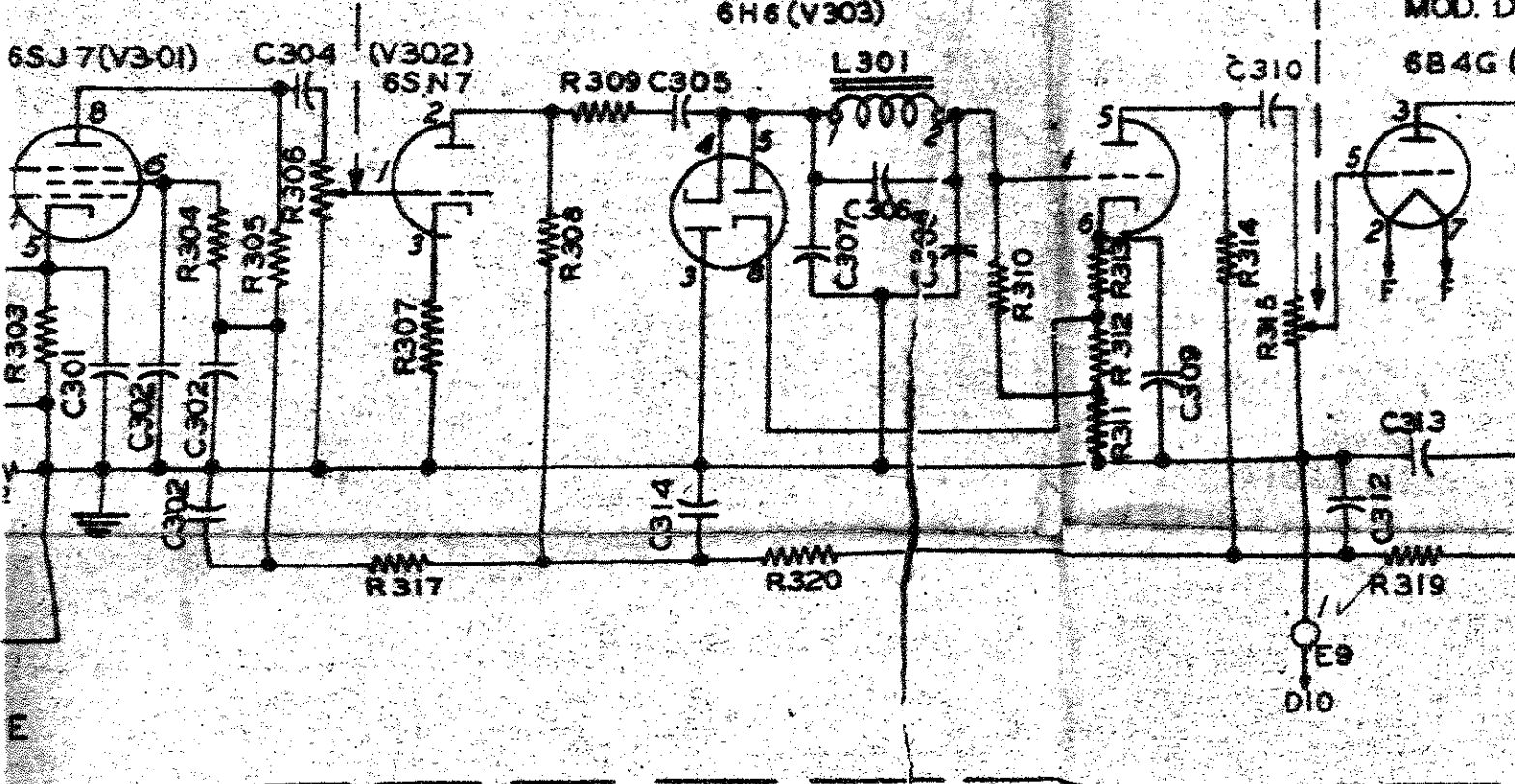




AUDIO GAIN

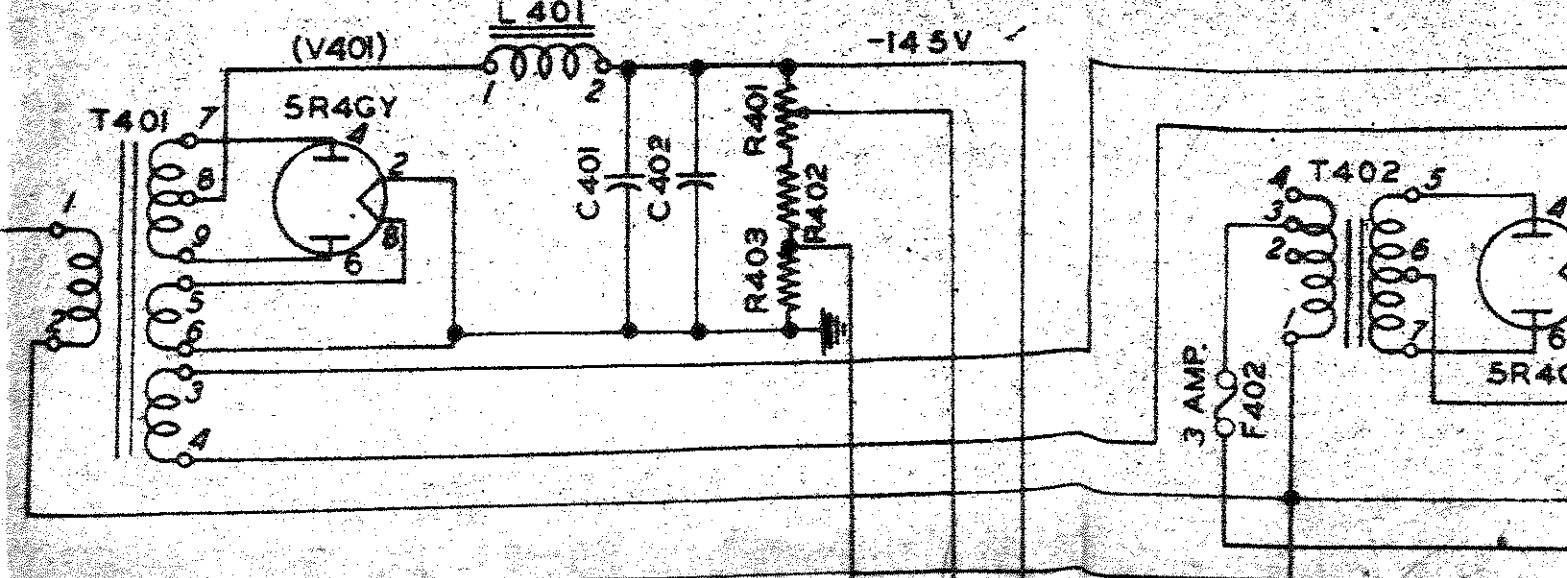
CLIPPER

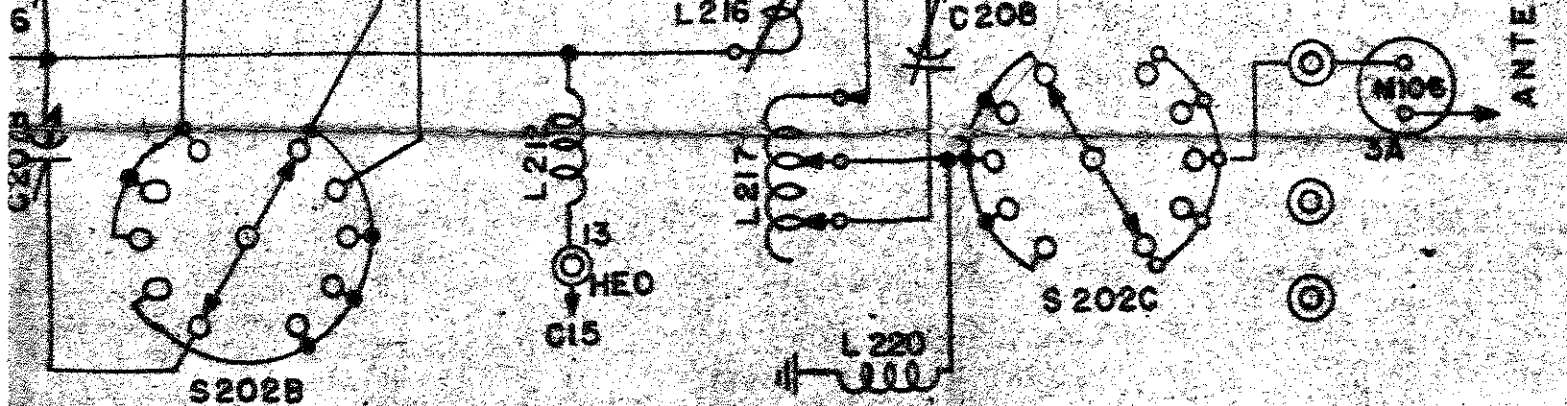
CLIPPER CONTROL



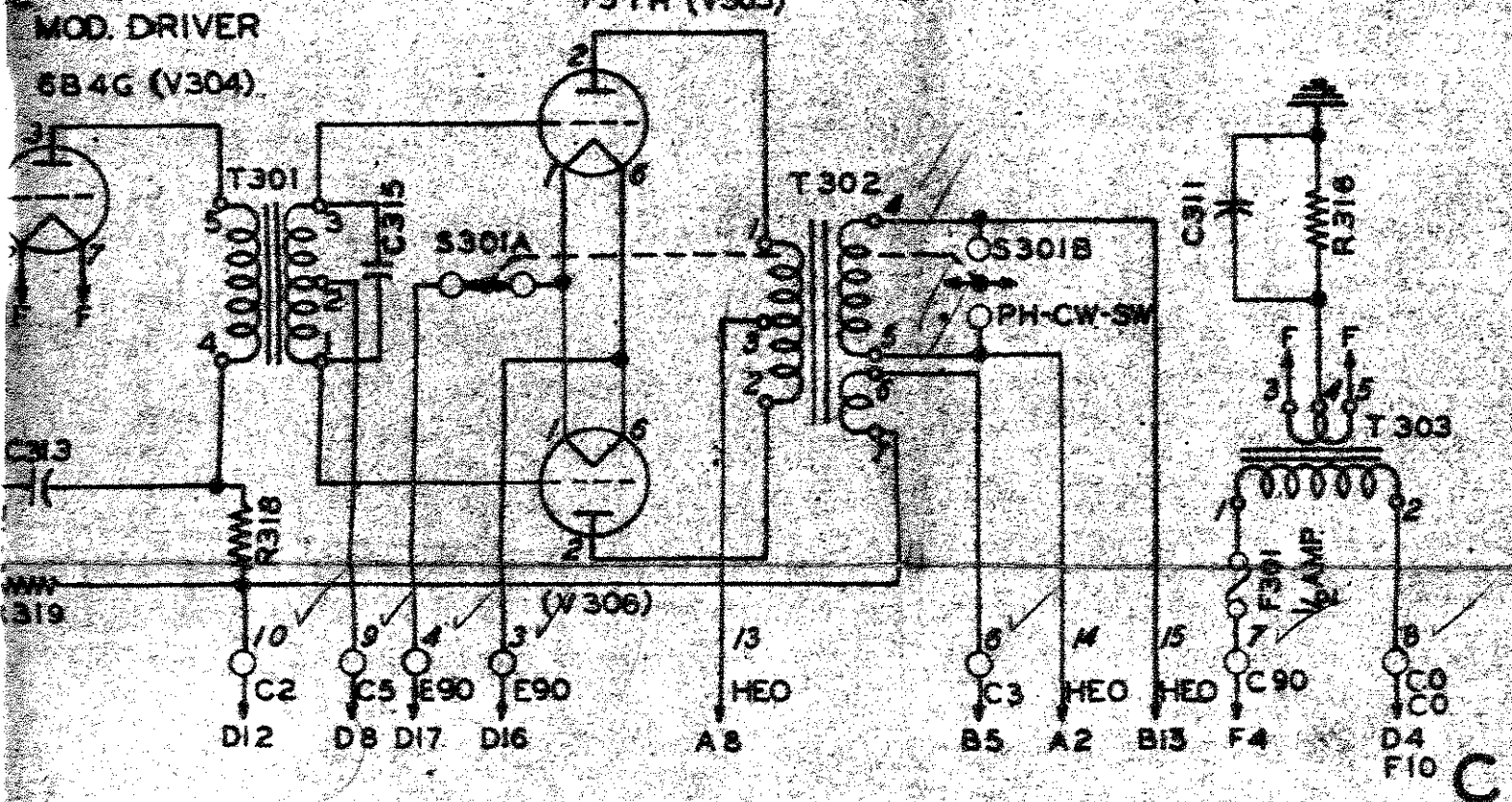
BIAS RECT

L.V

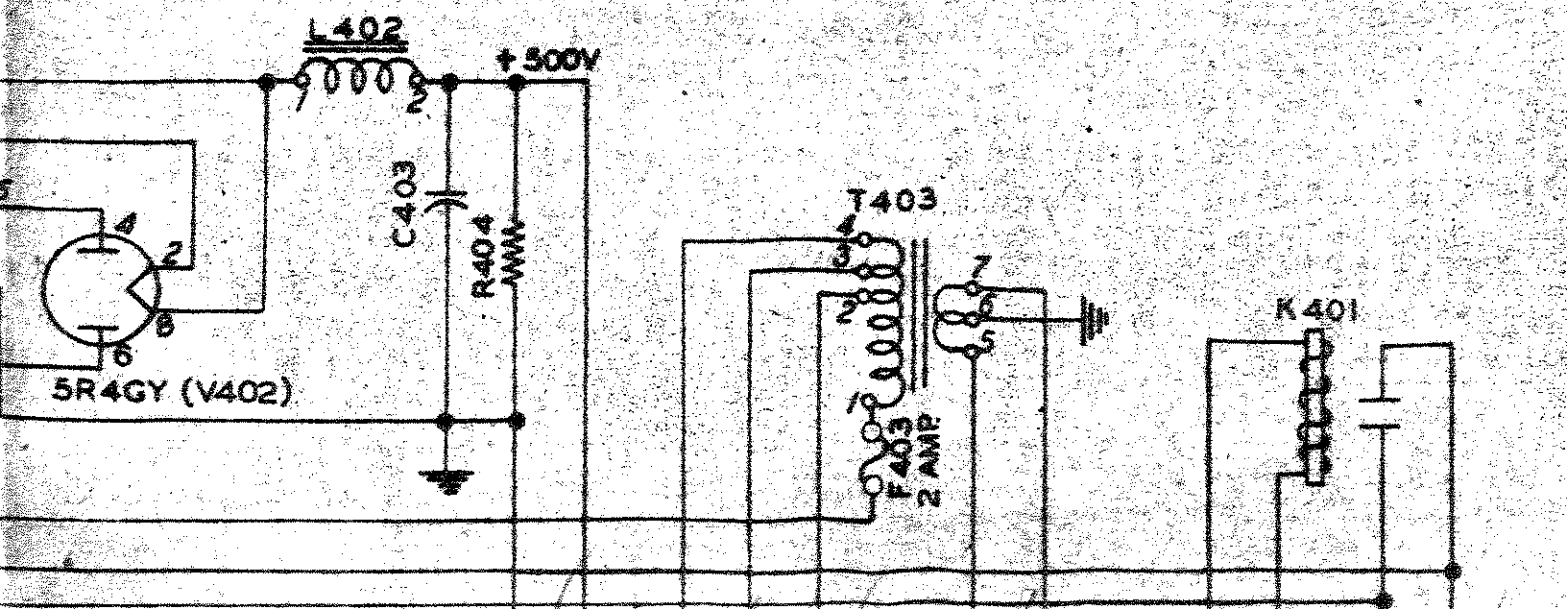


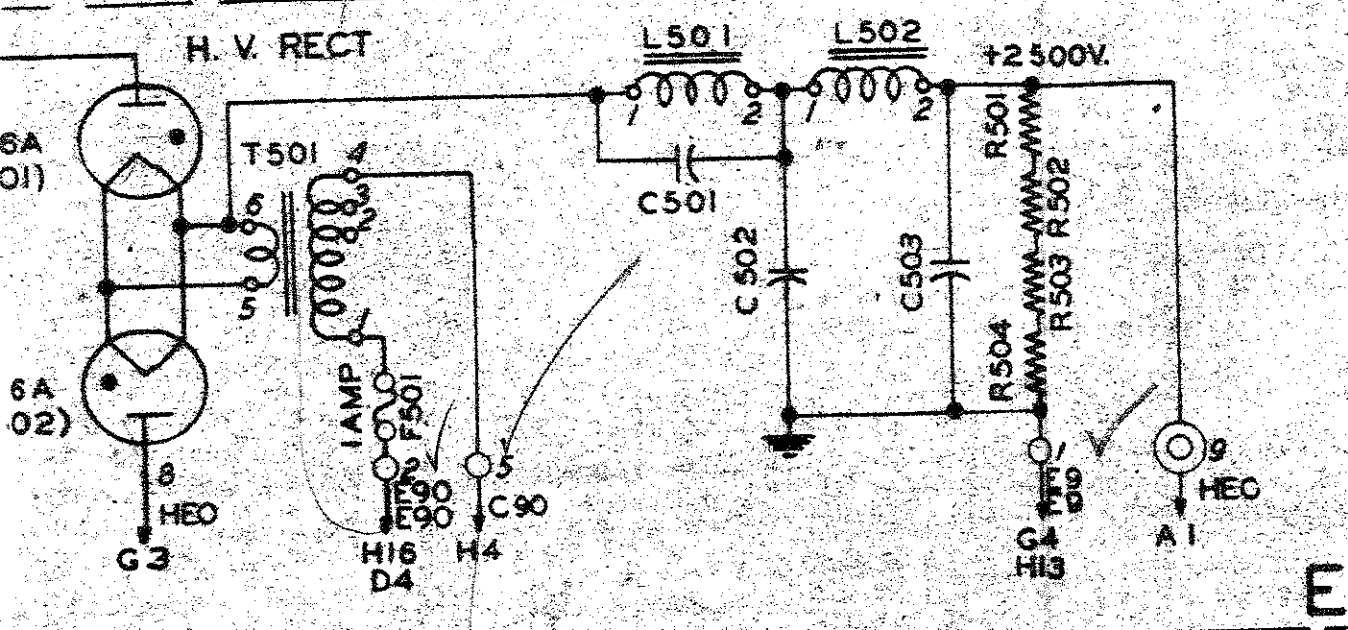
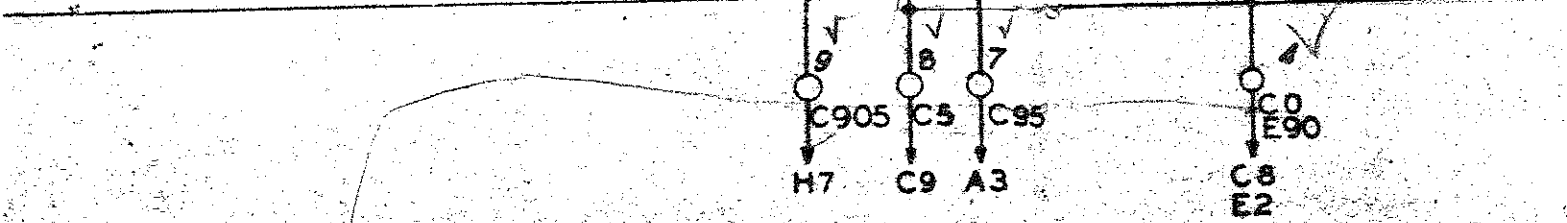


MODULATOR
75 TH (V305)



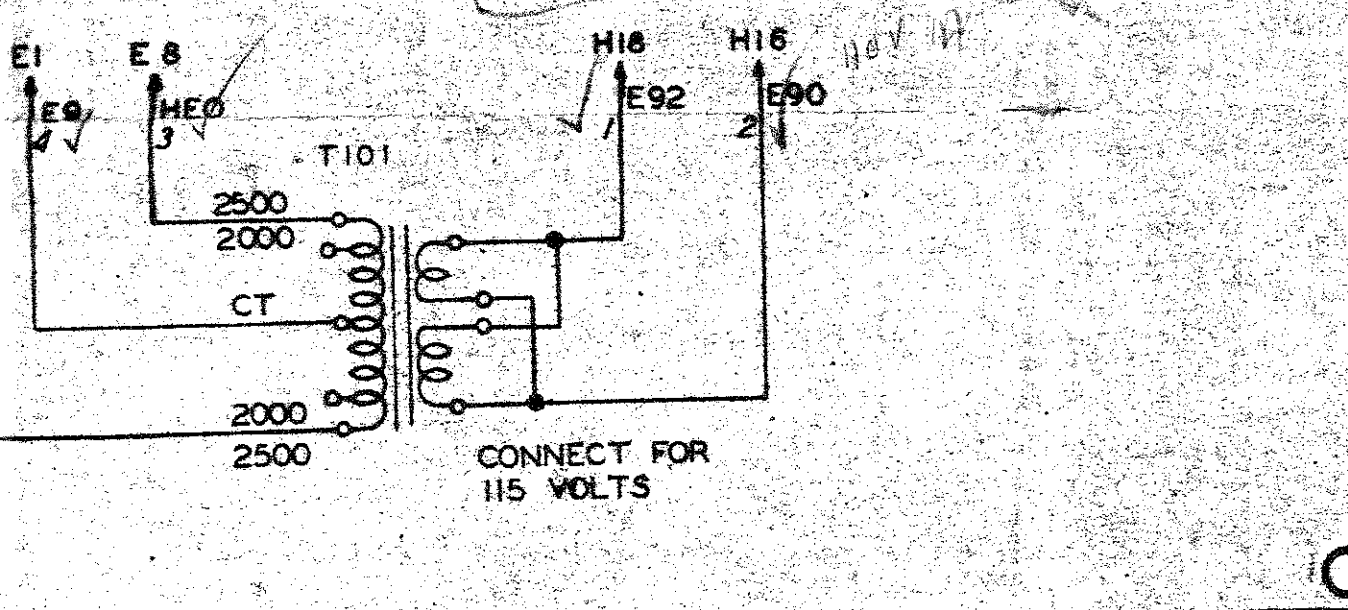
L.V. RECT





CONTROL PANEL

E



TERMINAL BRACKET

G

CABLE

CABLE